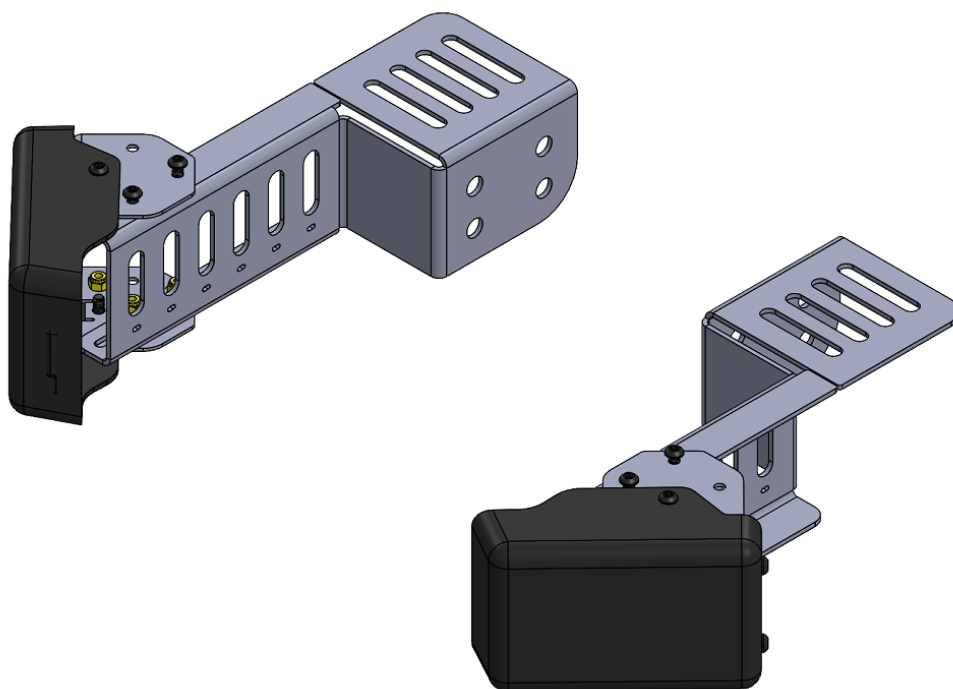




# SENSOR KIT INSTALLATION INSTRUCTIONS

PART NUMBER 08409

ISUZU D-MAX & MAZDA BT-50 SENSOR KIT



## PRODUCT DETAILS:

|                               |       |                           |     |    |
|-------------------------------|-------|---------------------------|-----|----|
| Part Number:                  | 08409 | Maximum Towing Braked:    | N/A | kg |
| ECU Number:                   | N/A   | Maximum Towing Unbraked:  | N/A | kg |
| Tail Harness Length Required: | N/A   | Maximum Static Ball Load: | N/A | kg |
| TBM/Lug Part Number:          | N/A   |                           |     |    |
| Wiring Part Number:           | N/A   |                           |     |    |

## FITTING DETAILS:

|                           |          |   |    |
|---------------------------|----------|---|----|
| Towbar Installation Time: | 15 Mins. | Hayman Reese SmartCODE Solution Required: | NO |
| Wiring Installation Time: | N/A      | RPA Disable/Other:                        | NO |
| Total Installation Time:  | 15 Mins. |   |    |
| Bumper Cut Required:      | No       |   |    |

### Note:

- Blind spot sensor relocation kit. nsures cab chassis sensors are correctly relocated when removal of rear bumper is carried out



# SENSOR KIT INSTALLATION INSTRUCTIONS

PART NUMBER 08409

ISUZU D-MAX & MAZDA BT-50 SENSOR KIT

**ENSURE THAT INSTRUCTIONS ARE UNDERSTOOD PRIOR TO FITMENT.**



**General:**

1. Ensure all hardware items have been included refer to assembly diagram.
2. It is recommended that the instructions are read through and completely understood before making any attempt to fit this product.
3. Be wary of any changes to vehicle designs or other accessories that may conflict with the installation of this product.
4. Before drilling ensure that the area is clear of fuel, electrical & other components.
5. All holes drilled into the body panels shall have all burrs & swarf removed then coated with a suitable rust preventative paint.
6. The high tensile fasteners supplied with this product were used to achieve the specified rating. If replacement is required ensure that fasteners of the same rating & quality are used. Contact an authorised **Hayman Reese** dealer if further information is required.
7. Ensure that all hardware is fastened to torque list below check fasteners on regular basis.

**FOR TOWING PURPOSES ONLY**  
**For towing capacity details please refer to vehicle owner's manual or to the manufacturer. Overloading can void your warranties.**

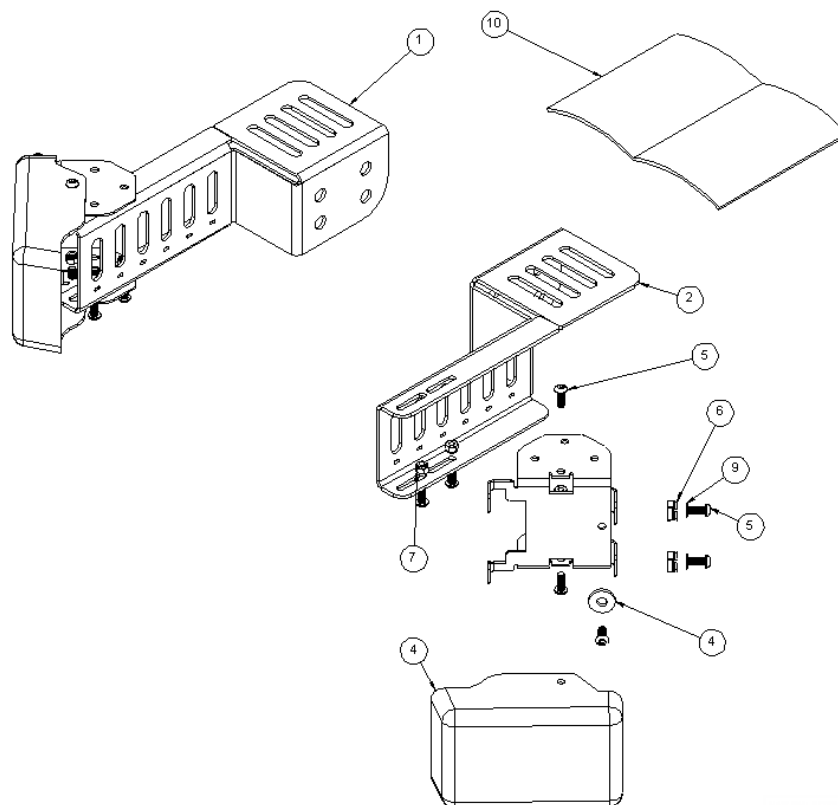


# SENSOR KIT INSTALLATION INSTRUCTIONS

PART NUMBER 08409

ISUZU D-MAX & MAZDA BT-50 SENSOR KIT

## SENSOR KIT ASSEMBLY DIAGRAM



| ITEM | DESCRIPTION                | QTY |
|------|----------------------------|-----|
| 1    | SENSOR RAIL LHS            | 1   |
| 2    | SENSOR RAIL RHS            | 1   |
| 4    | SENSOR COVER               | 2   |
| 4    | WASHER PLAIN M8x22x3       | 2   |
| 5    | SCREW BUTTON SOCKET CAP M6 | 18  |
| 6    | NUT CAGE M6 S/S MOLYBOND   | 4   |
| 7    | NUT NYLOC INS HEX HD M6x1P | 14  |
| 8    | SENSOR HOLDER              | 2   |
| 9    | WASHER FLAT M6x12.5x1.2    | 4   |
| 10   | FITTING INSTRUCTION        | 1   |

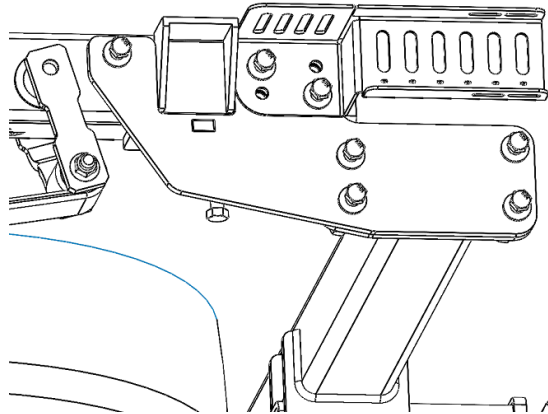
1. Fit the rail bracket on the side arm and secure with the existing screws.

Repeat for the other side.



**NOTE:**

Tow bar sold separately  
Remove sensors from vehicle bumper assembly.  
Orientation is important, care should be taken to ensure sensors are re installed into new bracket correctly.



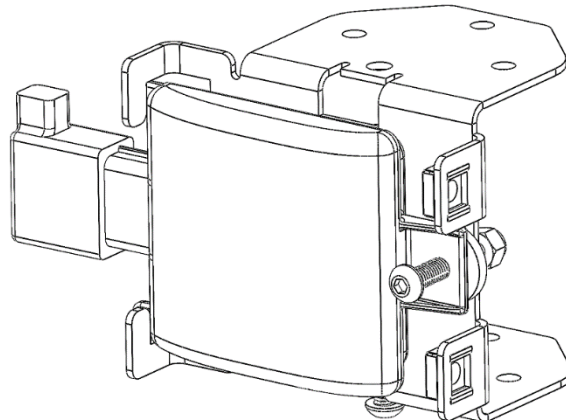
2. Fit the sensor to the retainer bracket and secure it with the 1x screw, 1x washer, 1x nyloc nut.

Fit 2x case nut to the retainer bracket.

Torque the M6 screw to 3 Nm

**Reconnect the harness to sensor.**

Repeat for the other side.

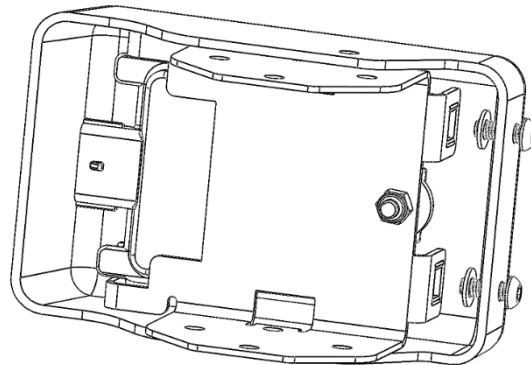


3. Slide the plastic cover over the retainer bracket and loosely secure with 2x screws, and 2x washers.

As shown.

**NOTE:**

Ensure sensors are installed on the same side and same orientation as when removed from bumper bar.



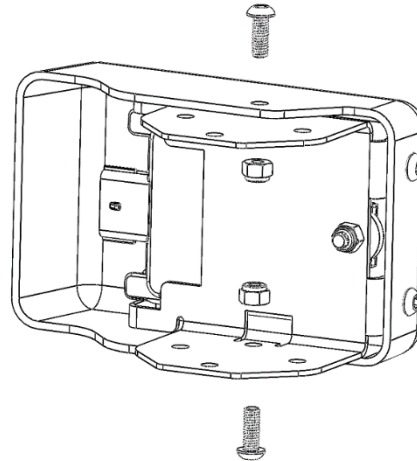


# SENSOR KIT INSTALLATION INSTRUCTIONS

PART NUMBER 08409

ISUZU D-MAX & MAZDA BT-50 SENSOR KIT

- 
4. Loosely secure with 2x screws and 2x nyloc nuts.  
As shown

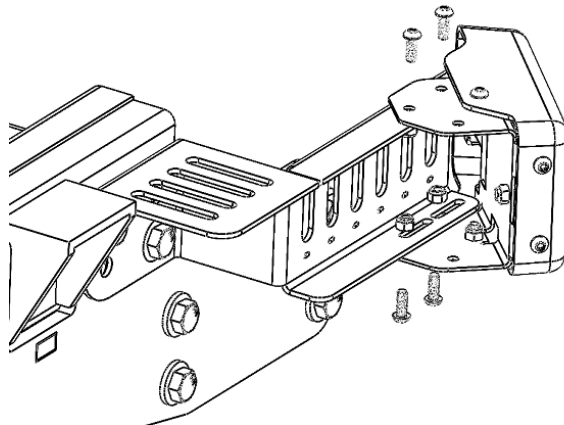


---

5. **ISUZU D-MAX model**

Fit the retainer bracket to the rail bracket and secure with 4x screws and 4x nuts.  
As shown

Torque fastener as follow:  
M6 screws = 3 Nm



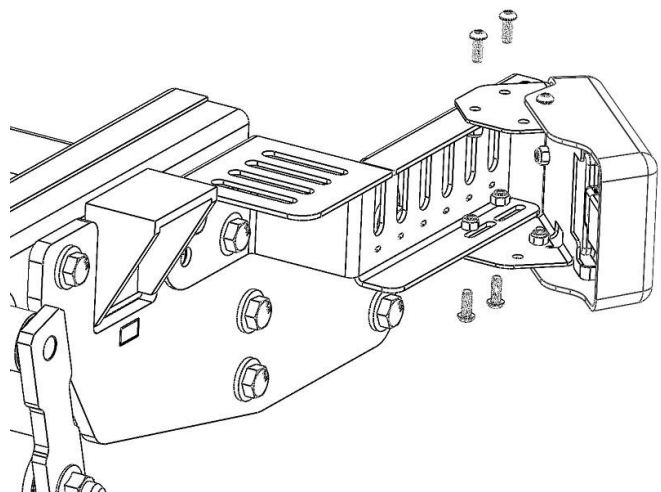
---

6. **MAZDA BT50 model**

Fit the retainer bracket to the rail bracket and secure with 4x screws and 4x nuts.  
As shown

Torque fastener as follow:  
M6 screws = 3 Nm

NOTE:  
The Mazda BT50 sensor retainer location is rotate opposite to the ISUZU D-MAX location.





# SENSOR KIT INSTALLATION INSTRUCTIONS

PART NUMBER 08409

ISUZU D-MAX & MAZDA BT-50 SENSOR KIT

- 
7. Route the sensor harness along the rail brackets and secure with cable ties. Ensure the harness secure away from exhaust and sharp edges.  
(Cable ties are not included)



# CUSTOMER INFORMATION

PLACE THESE INSTRUCTIONS IN THE  
VEHICLE'S GLOVEBOX AFTER INSTALLATION

**THANK YOU FOR PURCHASING HAYMAN REESE.  
WITH CORRECT MAINTENANCE AND CARE THIS PRODUCT WILL PROVIDE A  
LIFETIME OF TROUBLE-FREE OPERATION.**

## **WARRANTY INFORMATION:**

Hayman Reese Towbars are covered by a Lifetime Warranty.

Our goods come with guarantees that cannot be excluded under the Australian Consumer Law. You are entitled to a replacement or refund for a major failure and for compensation for any other reasonably foreseeable loss or damage. You are also entitled to have the goods repaired or replaced if the goods fail to be of acceptable quality and the failure does not amount to a major failure.

For further details please visit [www.haymanreese.com.au/warranty](http://www.haymanreese.com.au/warranty) or contact customer service on 1800 812 017 or [info@haymanreese.com.au](mailto:info@haymanreese.com.au).

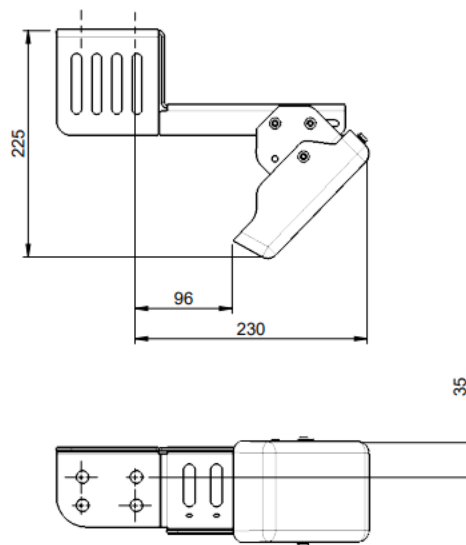
## Blindspot sensor relocation kit packaging dimensions

Part No. 08409 – ISUZU D-MAX/MAZDA BT-50 SENSOR KIT

Vehicle: ISUZU DMAX / MAZDA BT50 TF

- Sensor bracket kit to enable Blindspot sensor relocation on 07/20 and ON BT50 & Isuzu Dmax cab chassis models.
- Designed and tested to adjust sensor position higher than OEM to suit **all** aftermarket towbar designs.
- Use bracket mount point to chassis for reference

MAZDA BT50



ISUZU DMAX

