

Fitting Instructions



SKU

PRODUCT

TSP748

TAG Rear Step to suit Mitsubishi Express (02/2020 - on), Renault Trafic (05/2014 - on)



Scan for latest version of these instructions

SPECIFICATIONS

- Towbar Class: Standard Duty

IN THIS GUIDE

- Fitment Instructions
- Torque Settings
- Warranty Info

Step-By-Step Instructions

Warning:

Safety First: Always use correct safety equipment.

This towbar is NOT to be drilled, cut, welded or modified in any way.

Check the surrounding area before drilling into chassis or body panels for fuel lines, wiring harnesses and other components that may be a hazard.

General:

Before fitting this towbar read fitting instructions and check installation hardware is correct.

Check that the towbar is suitable for the vehicle and be wary of any changes to the vehicle design that may conflict with the fitting of this towbar.

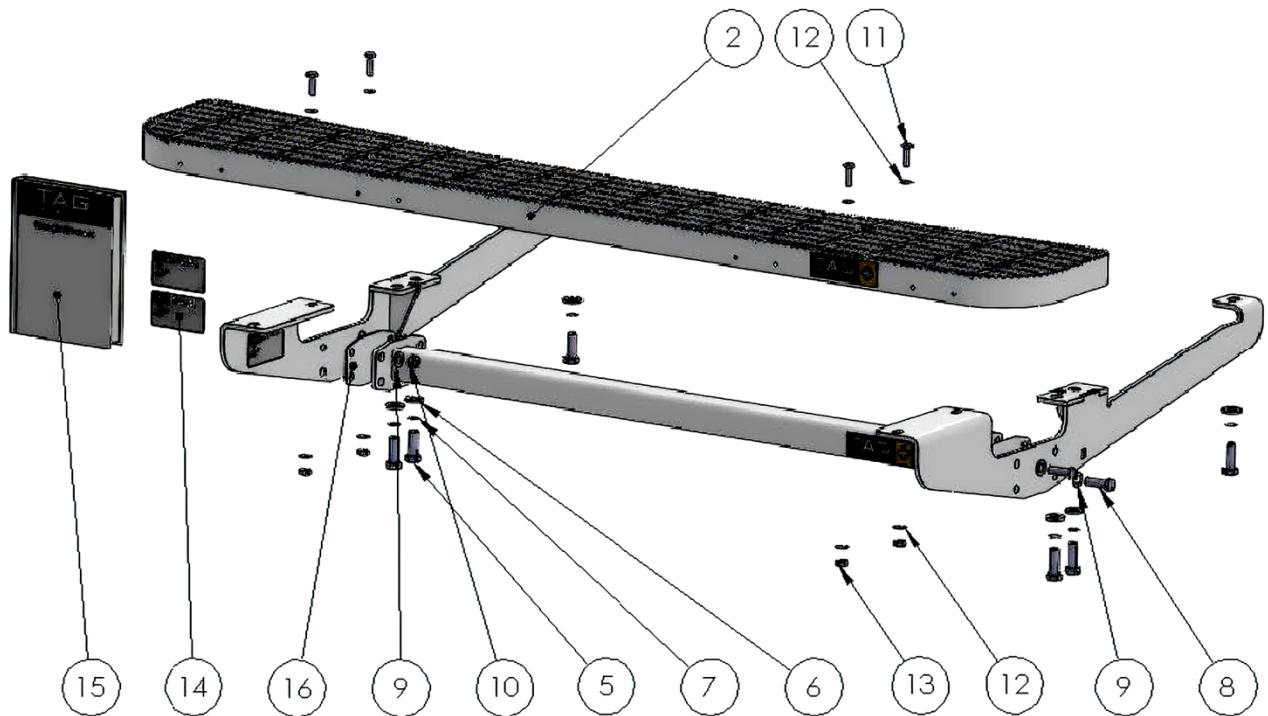
After drilling, blow any filings clear, remove any swarf and treat exposed metal with a rust inhibitor.

If this vehicle requires a bumper cut out, please check to make sure that you measure twice and check twice before cutting any panels as some bumper profiles can change.

If you are not sure then ask your towbar supplier.

Tighten all bolts as specified on the last page.

Towbar Fitting Instructions



Tools Required: Spanners, Sockets, Torque wrench

ITEM NO.	DESCRIPTION	QTY.	ITEM NO.	DESCRIPTION	QTY.
1	Welded Assembly for TSP748	1	9	M12 Flat Washer Zinc Clear	8
2	TAG REAR STEP (NON-TOWBAR)	1	10	M12x1.25 Nut	4
3	Chassis / Step Mount Assembly	1	11	M10x1.25x30 Bolt	4
4	Chassis / Step Mount Assembly	1	12	M10 FLAT WASHER FLAT ROUND	8
5	M14X40 1.5 PITCH B/O GR8.8	6	13	M10x1.25 Nut	4
6	BM14 FLAT WASHER FLAT ROUND	6	14	TAG Compliance plate	3
7	M14 Shakeproof Washer	6	15	Fitting Instruction - Blank	1
8	M12x1.25x40 Bolt	4	16	End Cap spacer	2

Step-By-Step Instructions

Warning:

Safety First: Always use correct safety equipment.

This towbar is NOT to be drilled, cut, welded or modified in any way.

Check the surrounding area before drilling into chassis or body panels for fuel lines, wiring harnesses and other components that may be a hazard.

General:

Before fitting this towbar read fitting instructions and check installation hardware is correct.

Check that the towbar is suitable for the vehicle and be wary of any changes to the vehicle design that may conflict with the fitting of this towbar.

After drilling, blow any filings clear, remove any swarf and treat exposed metal with a rust inhibitor.

If this vehicle requires a bumper cut out, please check to make sure that you measure twice and check twice before cutting any panels as some bumper profiles can change.

If you are not sure then ask your towbar supplier.

Tighten all bolts as specified on the last page.

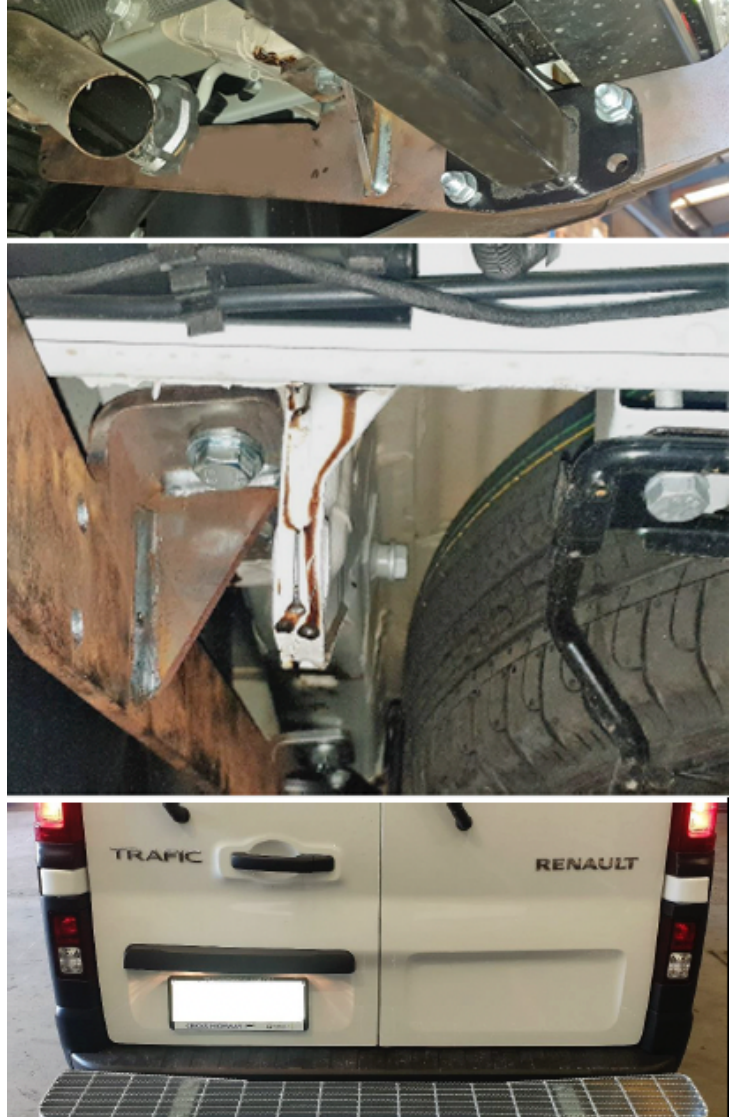
Towbar Fitting Instructions



Step 1. Fit Brackets & Step

Note: Removal of the bumper is only necessary if the installation requires the relocation of the factory fitted reverse sensors.

- a. Lift PS endplate to the chassis & insert 3x M14x 40 bolts with shakeproof & flat washers into captive threads of chassis. Leave loose.
- b. Repeat on DS. Leave loose.
- c. Lift welded main bar up to end plates and insert 4x M12x 40 bolts with washers & nuts. Leave loose.
 - If there is more than approx. 3mm clearance between the parts on each side, then spacers will be required.
 - If the clearance is less than this, spacers will not be required between the parts.
- d. Mount the step onto the bracket /step assemblies and insert 4x M10x 30 bolts with flat washers & nuts. Leave loose.
- e. Tighten the M14 chassis bolts.
- f. Tighten the M12 main bar bolts.
- g. Tighten the M10 step bolts.



Towbar Fitting Instructions



Step 2. Apply Door Sticker

- a. Apply compliance label to driver's door A-pillar. Place spare compliance Label & fitting Instructions in the vehicle handbook.



Torque table for bolt tightening

Diameter	Pitch	Grade	Torque	Unit
M8	1.25	8.8	29	Nm
M10	1.25	8.8	57	Nm
M10	1.50	8.8	44	Nm
M12	1.25	8.8	101	Nm
M12	1.50	8.8	97	Nm
M12	1.75	8.8	77	Nm
M14	2.00	8.8	122	Nm
M16	2.00	8.8	190	Nm
Imperial Bolt Torque Settings				
3/8"	UNC	8	44.75	Nm
1/2"	UNC	8	108.5	Nm

TAG Warranty Statement

SWD warrants your TAG Towbar for its full product life under the following conditions:

- You can show proof of purchase.
- The towbar has been correctly installed by a suitably qualified installer.
- The towbar has not been modified or abused in any way and has only been used for the purpose intended.
- The towbar was not fitted second hand to your vehicle.

The extent of this warranty includes materials and workmanship used in the manufacture of the towbar and is to the equivalent value of current, full replacement cost.

Nothing stated or implied in this warranty limits in any way, the statutory rights that you may have.

To make a claim visit the original installer in the first instance or, if you are unable to or are not satisfied with their help, then contact us direct by phone on 1300 669122 or visit www.swd.com.au