

# Fitting Instructions

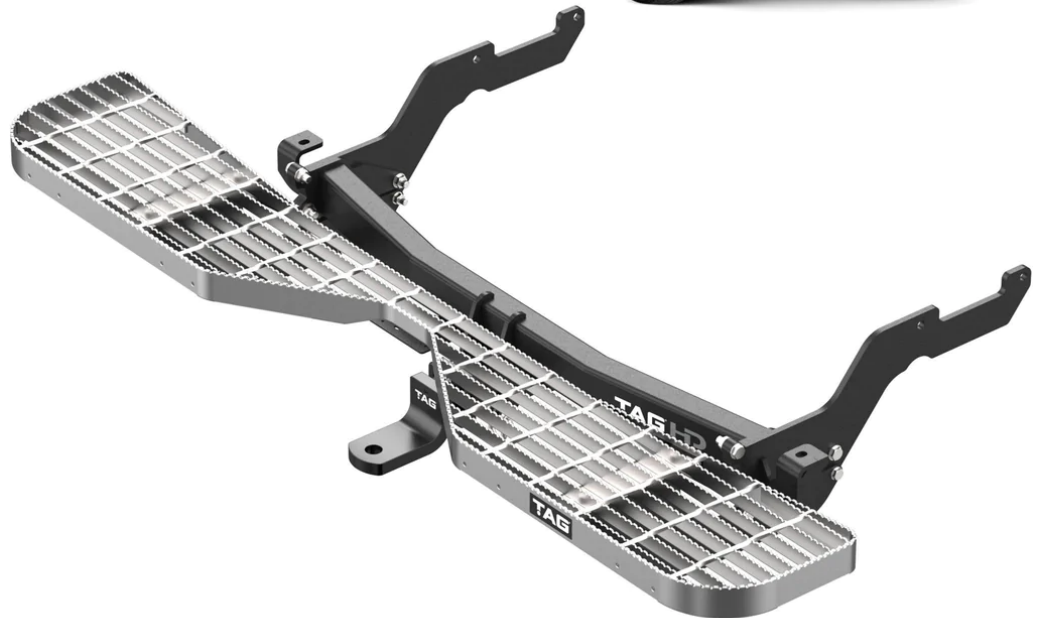


SKU

PRODUCT

**T7Z829**

**TAG Rear Step to suit Hyundai Staria (01/2021 - on)**



Scan for latest version of these instructions

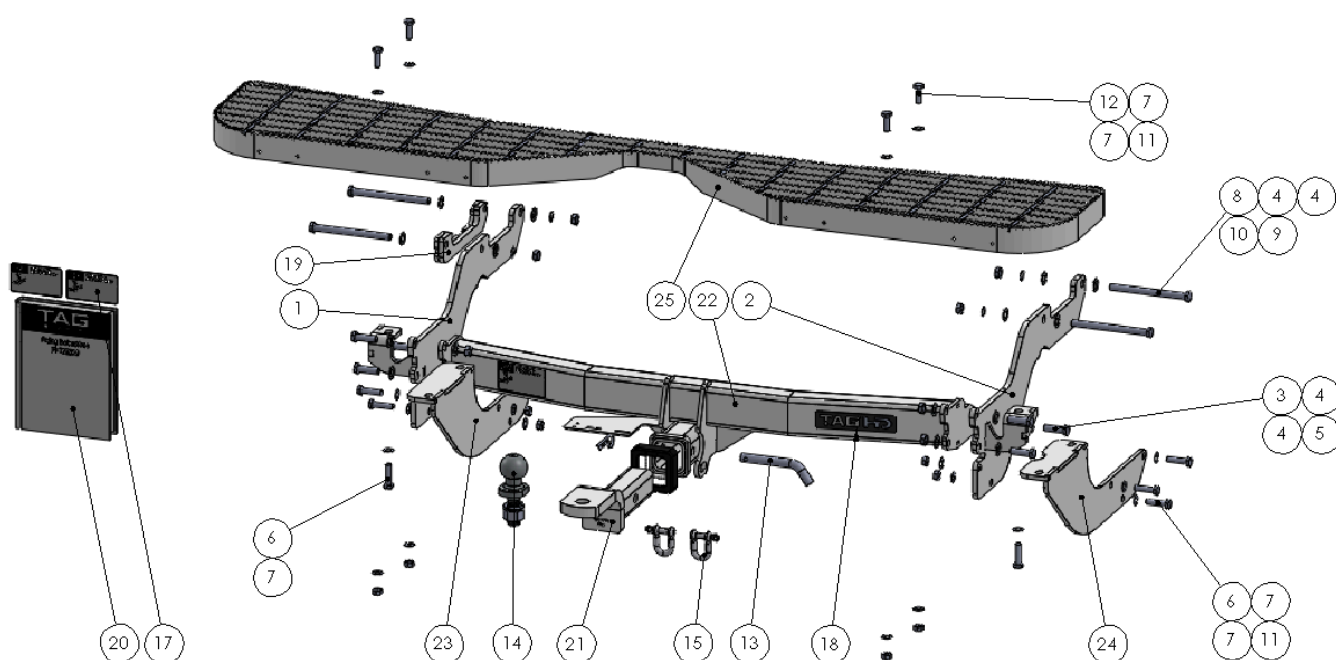
## SPECIFICATIONS

- Towbar Class: Heavy Duty
- Towing Capacity: 2500kg

## IN THIS GUIDE

- Fitment Instructions
- Torque Settings
- Warranty Info

# Towbar Fitting Instructions



Spanners, Sockets, Trim Removal Tool, Torque wrench.

No.	DESCRIPTION	Qty.	No.	DESCRIPTION	Qty.
1	Main Bar Assembly for T7Z828	1	14	M12 Shakeproof Washer	4
2	End Plate Assembly	1	15	M10x1.25 Nut	10
3	End Plate Assembly DS	1	16	M10x1.25x30	4
4	Step Mount Assembly	1	17	Class 4 Pin & Clip	1
5	Step Mount Assembly DS	1	18	50mm TAG Tow Ball with Flat edge - Chrome	1
6	TAG Rear Step Galvanised (Towbar Relief)	1	19	TAG D-Shackle - 10mm, 1000kg,	2
7	M12x1.25x40 Bolt	6	20	Cover Hitch Receiver Collar TAG	1
8	M12 Flat Washer	20	21	TAG Compliance Sticker	3
9	M12x1.25 Nut	6	22	TAG HD Sticker 150 x 33mm	1
10	M10x1.25x40 Bolt	8	23	Chassis Spacer Assembly	1
11	M10 Flat Washer	22	24	Fitting Instruction	1
12	M12x1.75x150 Bolt	4	25	L4180 Ball Mount	1
13	M12x1.75 Nut	4			

## Step-By-Step Instructions

### Warning:

- This product is for towing purposes only and must only be loaded as shown in your vehicle Owner's Manual.
- This towbar is NOT to be drilled, cut, welded, or modified in any way.
- Check behind chassis rail and body panels before drilling to ensure no hazards are present
- All load ratings shown are under the assumption your trailer has a functional braking system installed
- When installed in positions other than the one depicted in these instructions the Tow Ball Mount may interfere or obstruct certain features of your vehicle (tailgate opening, Chassis clearance, etc.)

### General:

- Before fitting this towbar read fitting instructions and check installation hardware is correct.
- Check that the towbar is suitable for the vehicle and be wary of any changes to the vehicle design that may conflict with the fitting of this towbar. (Tray, Canopy, Suspension etc.)
- After drilling, blow any filings clear, remove any swarf and treat exposed metal with a rust inhibitor.
- The high tensile fasteners supplied with this product are an integral feature to achieving the specified rating, if replacement is required ensure that fasteners of the same grade (8.8) & quality are used. Contact an authorised TAG distributor or the TAG fitment centre - (07) 3208 3022 - if further information is required.

### Towbar Maintenance and Care:

It is recommended, when not in use, the Tow Ball Mount assembly and class 4 Pin and Clip is stored inside the car away from moisture to prevent standing water from forming rust. Inspect to ensure, on regular basis, fasteners are torqued to the specifications below and in good condition.

**Ensure that the fitting instructions are read and understood prior to fitment**

**Place these instructions in the vehicle's glovebox after installation is completed**

# Towbar Fitting Instructions



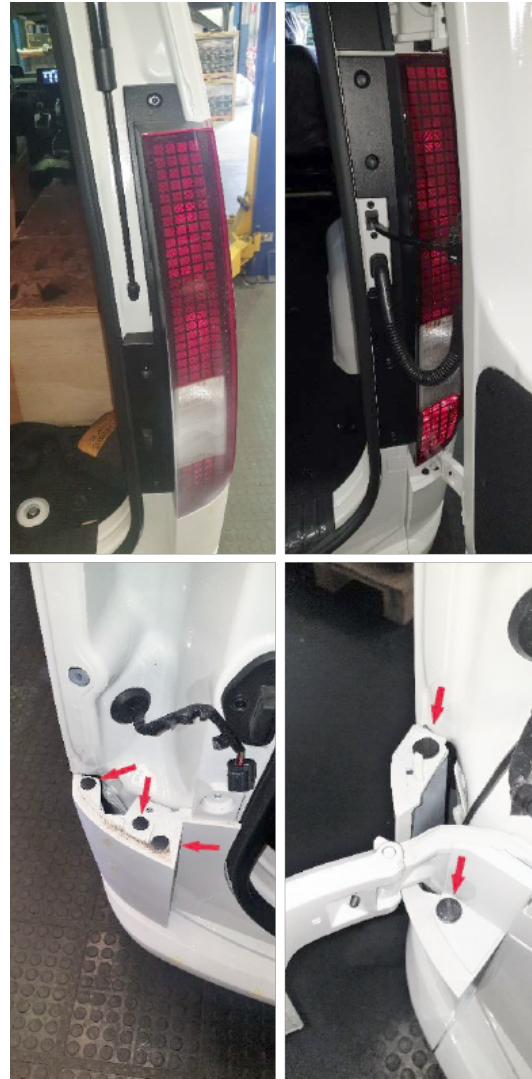
## Step 1. Remove Bumper

**Note to installer: Fitting of this step will inhibit the correct function of the reverse sensors. It is recommended that suitable brackets be used to relocate the OEM reverse sensors onto the step & wiring extended.**

**The plastic bumper must be removed from the vehicle to extract/ disconnect the sensors and apply filler plugs to existing holes..**

- a. This instruction applies to both lift-up tail gate (TG) & barn door (BD) models.
- b. Open door(s) and remove 4x phillips screws from each taillight assembly and gently remove rearward from body. Disconnect wiring.
- c. Remove 1x phillips screw and 2x scrivenets from inside each wheel arch.
- d. Remove 3x scrivenets from behind each wheel arch attaching bumper to mud guard.
- e. Disconnect large sensor harness from inside rear LHS of bumper.
- f. Remove 2x M10 bolts (14mm socket) fastening the bumper to the chassis rail. Discard 2 bolts.
- g. Use masking tape to protect paint on (BD) models for bumper removal as pictured.
- h. Beginning at each wheel arch, carefully peel the plastic bumper away from the body. Pull rearwards firmly below door area as bumper clips onto body.
- i. Disconnect and remove the sensors from the bumper. Insert blanking plugs into vacant holes if required.
- j. Reinstall the bumper in reverse of steps 1a-h.

Note: do not re-install the rear-most M10 chassis bolts on each side.



# Towbar Fitting Instructions

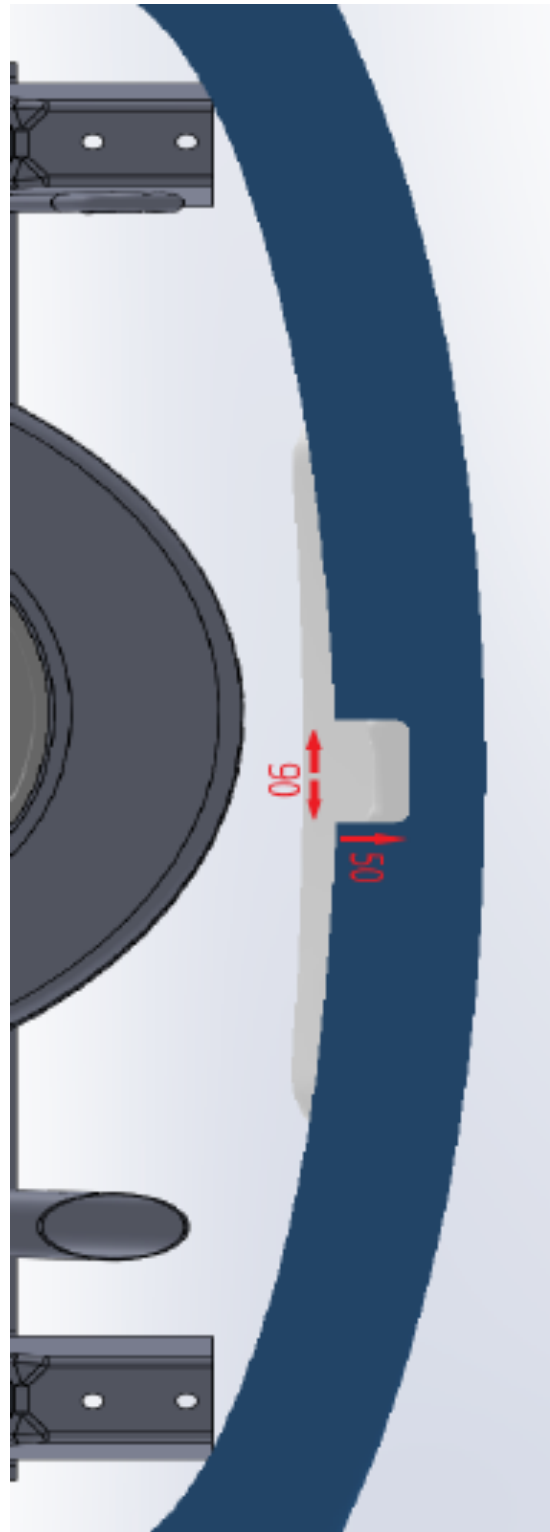


## Step 2. Cut Bumper

The towbar installer is ultimately responsible for the location & quality of the bumper cut. To avoid mistakes, please use the following measurements as a guide only. We suggest making small incremental cuts and regularly test fit the bumper to ensure an accurate and tidy appearance. The additional application of rubber pinch-weld around the cut edge ensures a neat & tidy look.

- a. Establish the centreline of the bumper & mark.
- b. Measure & mark 45mm either side of the centreline and 50mm deep.
- c. Cut the bumper using an air saw or similar device. Deburr all cut edges.
- d. Reinstall the bumper in reverse of steps 1a-g.

Note: do not re-install the rear-most M10 crash-bar bolts on each side.



# Towbar Fitting Instructions



## Step 3. Fit Towbar

a. Assemble the towbar parts (Main bar, & Endplates) **off the vehicle**, aligning endplates to main bar end caps. Torque all bolts to the specification on page 2.



b. Insert 2x M1 2x1.75x150 bolts with flat washers into the chassis holes from the outside till end of bolt is level with inside of chassis.

c. Lift the towbar assembly by swinging DS in toward front and allowing PS to swing up to chassis. Push M12x 150mm bolts through to hold bar in place.

d. On PS, pull bolts back individually to allow the 18mm spacer to be inserted between the end plate & chassis. Loosely fasten all bolts with flat, shake proof washers & nuts.

e. Insert M10x 1.25x 40 bolts with flat washers into each end plate outrigger and loosely fasten to underside of bumper mounting bracket/ chassis. (Rear-most hole).

f. Tighten the 2x M10x 1.25x 40 bolts to the torque specification on the table.

g. Re-install exhaust onto hangers.

h. Use cable ties to fasten the sensor harness to the main bar.



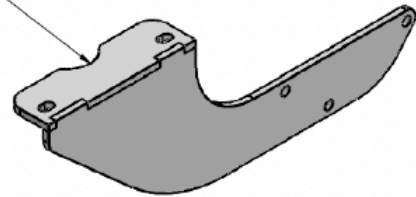
# Towbar Fitting Instructions



- i. Loosely fasten step mounting brackets to the **inside** of PS end plate & **outside** of DS end plate. **\*Both step mounting bracket top plates are directed toward the PS.\***  
**\*\*DS step mounting bracket has identifying cut-out on top plate.**
- j. Place step onto mounting brackets & align holes. Insert M10x1.25x30 bolts with washers & loosely fasten with Nuts & Flat washers on the underside.
- k. Tighten all bolts to the torque specification on page 2 beginning with those on the chassis followed by the step mounts & step.



DS Identifier



## Step 5. Fit Ball Mount and Apply Door Sticker

- a. Attach plastic hitch surround to receiver.
- b. Insert ball mount into hitch receiver and secure with the pull pin and R-clip.
- c. Apply one of the compliance labels to the pillar of the driver's door.
- d. Leave the remaining label & the fitting instructions in the vehicle handbook.



## Torque table for bolt tightening

Diameter	Pitch	Grade	Torque	Unit
M8	1.25	8.8	29	Nm
M10	1.25	8.8	57	Nm
M10	1.50	8.8	44	Nm
M12	1.25	8.8	101	Nm
M12	1.50	8.8	97	Nm
M12	1.75	8.8	77	Nm
M14	2.00	8.8	122	Nm
M16	2.00	8.8	190	Nm
<b>Imperial Bolt Torque Settings</b>				
3/8"	UNC	8	44.75	Nm
1/2"	UNC	8	108.5	Nm

## TAG Warranty Statement

SWD warrants your TAG Towbar for its full product life under the following conditions:

- You can show proof of purchase.
- The towbar has been correctly installed by a suitably qualified installer.
- The towbar has not been modified or abused in any way and has only been used for the purpose intended.
- The towbar was not fitted second hand to your vehicle.

The extent of this warranty includes materials and workmanship used in the manufacture of the towbar and is to the equivalent value of current, full replacement cost.

Nothing stated or implied in this warranty limits in any way, the statutory rights that you may have.

To make a claim visit the original installer in the first instance or, if you are unable to or are not satisfied with their help, then contact us direct by phone on 1300 669122 or visit [www.swd.com.au](http://www.swd.com.au)