

FITTING INSTRUCTIONS

Ford Ranger/Mazda BT50 (extended) - T7F706



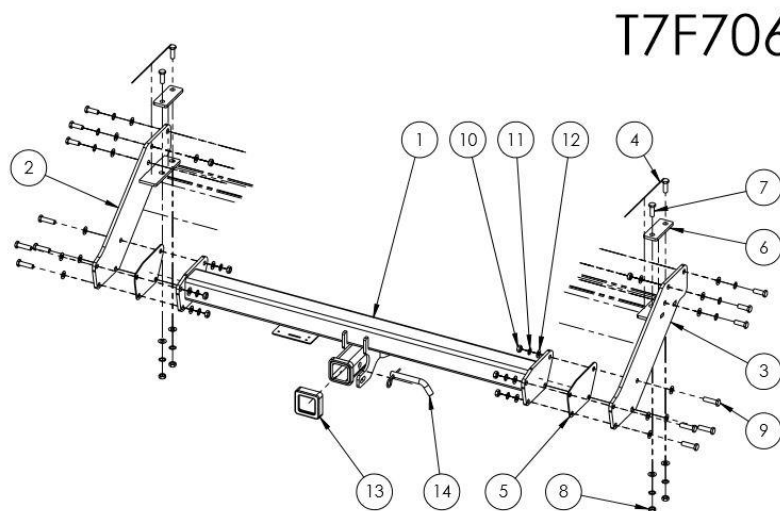
Max Towing Capacity: 3500Kg	Towbar Weight: Approx. 30Kg
Max Ball Load: 350Kg	



Tools Required:

Spanners/Sockets, Torque Wrench

Kit Contents					
Item	Description	Qty	Item	Description	Qty
1.	Towbar Centre Section	1	10.	M12x1.25 Nut	8
2.	End Plate Subassembly PS	1	11.	M12 Shake Proof Washer	20
3.	End Plate Subassembly DS	1	12.	M12 Flat Washer	30
4.	M12x35x1.75 Bolt on Wire	2	13.	TAG Hitch Collar Cover	1
5.	Spacer 3mm	2	14.	Class 4 Pin & Clip	1
6.	Chassis Top Plate	2	...	Door Sticker	1
7.	M12x35x1.75 Bolt	10	...	Spare Compliance Sticker	1
8.	M12x1.75 Nut	6	...	D-Shackles	2
9.	M12x45x1.25 Bolt	8



Warning:

- This product is for towing purposes only and must only be loaded as shown in your vehicle Owners Manual.
- This towbar is NOT to be drilled, cut, welded or modified in any way.
- Check behind chassis rail and body panels before drilling to ensure no hazards are present

General:

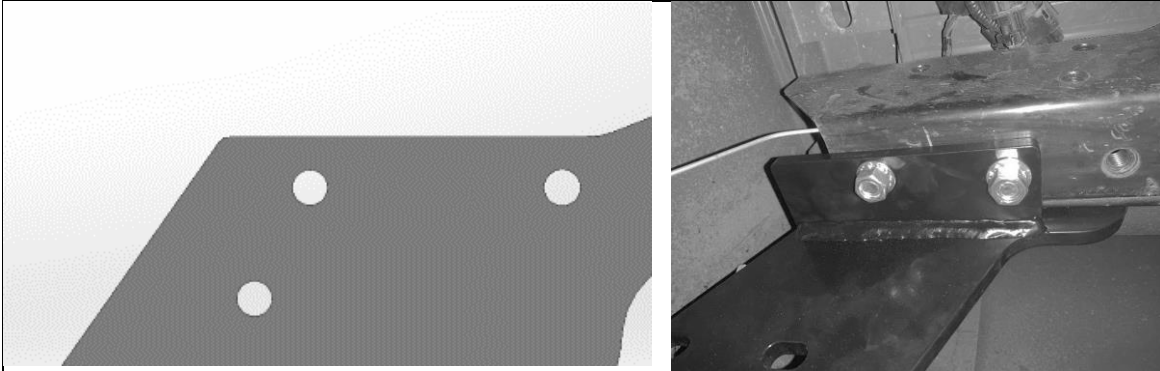
- Before fitting this towbar read fitting instructions and check installation hardware is correct.
- Check that the towbar is suitable for the vehicle and be wary of any changes to the vehicle design that may conflict with the fitting of this towbar.
- After drilling, blow any filings clear, remove any swarf and treat exposed metal with a rust inhibitor.
- If this vehicle requires a bumper cut out, please check to make sure that you measure twice and check twice before cutting any panels as some bumper profiles can change. If you are not sure, then please ask your towbar supplier

FITTING INSTRUCTIONS

Ford Ranger/Mazda BT50 (extended) - T7F706



Step 1 | Attach Towbar End Plates



Instructions	Tools	Fasteners/Torques
<p>Loosely secure both towbar end plates to the chassis & refit the rear step in the following order.</p> <ul style="list-style-type: none"> - Using 3x M12x1.75x35 Bolts, Flat and Shake Proof Washers in the captive nuts on the outside of each chassis rail. Note there is no captive nut for one bolt, this will require a nut and washer on the inside of the chassis rail - Using 1x M12x1.75x35 Bolt on Wire & 1x M12x1.75x35 Bolt downwards through the Top plate and vertical hole in each chassis rail. Secure with Flat Washers, Shake Proof Washers and M12x1.75 Nuts. <p>Tighten the bolts to hold the end plates against the chassis rails. DO NOT tighten to torque spec.</p>	<p>M12 Spanners/ Sockets</p>	<p>N/A</p>

Step 2 | Determine if Spacers are required



Instructions	Tools	Fasteners/Torques
<p>Position the Towbar centre section between the two end plates.</p> <p>If there is more than approx. 3mm clearance between the parts on each side, then spacers will be required.</p> <p>If the clearance is less than this, spacers will not be required between the parts.</p>	<p>N/A</p>	<p>N/A</p>

FITTING INSTRUCTIONS

Ford Ranger/Mazda BT50 (extended) - T7F706



Step 3 | Secure Towbar Centre Section and Torque Bolts



Instructions	Tools	Fasteners/Torques
<p>Using 4x M12x45 Bolts, Shake Proof Washers and Nuts, 8x M12 Flat Washers, and 1x Spacer (if required) per side. Bolt head should be on the outside and shake proof washer should be on the inside of the flange. Loosely secure the towbar centre section between the end plates. Ensure centre section is right side up with the hitch receiver below the main cross-bar. When all hardware is in place, tighten all bolts (including those into the chassis rails) to the torque specified.</p>	<p>M12 Spanners/ Sockets -Torque Wrench</p>	<p>M12 = 100Nm</p>

Step 4 | Apply Sticker to Door Jam



Instructions	Tools	Fasteners/Torques
<p>Apply Towbar info label to the inside of the driver's side door Jam.</p>	<p>N/A</p>	<p>N/A</p>

FITTING INSTRUCTIONS

Ford Ranger/Mazda BT50 (extended) - T7F706



WARRANTY STATEMENT

The manufacturer of TAG branded products, warrants your TAG Towbar for its full product life under the following conditions:

- You can show proof of purchase.
- The towbar has been correctly installed by a suitably qualified installer.
- The towbar has not been modified or abused in any way and has only been used for the purpose intended.
- The towbar was not fitted second hand to your vehicle.

The extent of this warranty includes materials and workmanship used in the manufacture of the towbar and is to the equivalent value of current, full replacement cost.

Nothing stated or implied in this warranty limits in any way, the statutory rights that you may have.

To make a claim visit the original installer in the first instance or, if you are unable to or are not satisfied with their help, then contact us direct by phone on 07 3208 3022 or via email qldsales@arandatowbars.com.au