

FITTING INSTRUCTIONS

LDV T60 – T7P702



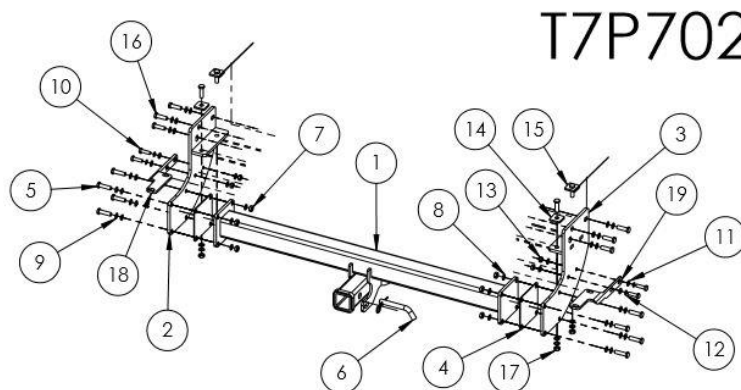
Max Towing Capacity: 3000kg	Towbar Weight: Approx. 30kg
Max Ball Load: 300kg	Wiring Harness Part #: UNTEC2W



Tools Required:

M10, M12 Spanners/Sockets, Torque Wrench (**Torque M10 to 60Nm, M12 to 100Nm**)

Kit Contents					
No.	Description	Qty	No.	Description	Qty
1.	Towbar Centre Section	1	12.	M10 Shake Proof Washer	4
2.	Towbar End Plate Passenger Side	1	13.	M10x1.5 Nut	4
3.	Towbar End Plate Drivers Side	1	14.	Top Plate	2
4.	3mm Spacer	2	15.	Top Plate, M12x1.75x40 on Wire	2
5.	M12x1.25x45 Bolt	8	16.	M12x1.75x40 Bolt	8
6.	Class 4 Towbar Pin & Clip	1	17.	M12x1.75 Nut	4
7.	M12x1.25 Nut	8	18.	Rear Step/Bumper Bracket PS	1
8.	M12 Flat Washer	26	19.	Rear Step/Bumper Bracket DS	1
9.	M12 Shake Proof Washer	18	...	Door Sticker	1
10.	M10x1.5x35 Bolt	4	...	Spare Compliance Sticker	1
11.	M10 Flat Washer	8



Warning:

- This product is for towing purposes only and must only be loaded as shown in your vehicle Owner's Manual.
- This towbar is NOT to be drilled, cut, welded or modified in any way.
- Check behind chassis rail and body panels before drilling to ensure no hazards are present

General:

- Before fitting this towbar read fitting instructions and check installation hardware is correct.
- Check that the towbar is suitable for the vehicle and be wary of any changes to the vehicle design that may conflict with the fitting of this towbar.
- After drilling, blow any filings clear, remove any swarf and treat exposed metal with a rust inhibitor.
- If this vehicle requires a bumper cut out, please check to make sure that you measure twice and check twice before cutting any panels as some bumper profiles can change. If you are not sure, then please ask your towbar supplier

FITTING INSTRUCTIONS

LDV T60 – T7P702



Step 1 Remove Rear Step



Instructions	Tools	Fasteners/Torques
<p>Disconnect any wiring attached to the rear step.</p> <p>Remove 2x rearmost bolts securing the rear step to the chassis rails on each side.</p> <p>Lower spare tire if more room is required.</p> <p>With 2 people supporting the rear step, loosen the remaining bolt in each chassis rail and remove the rear step from the vehicle, carefully set aside.</p> <p>The 6 bolts removed can be discarded.</p>	Spanners/ Sockets	N/A

Step 2 Remove brackets from Rear Step



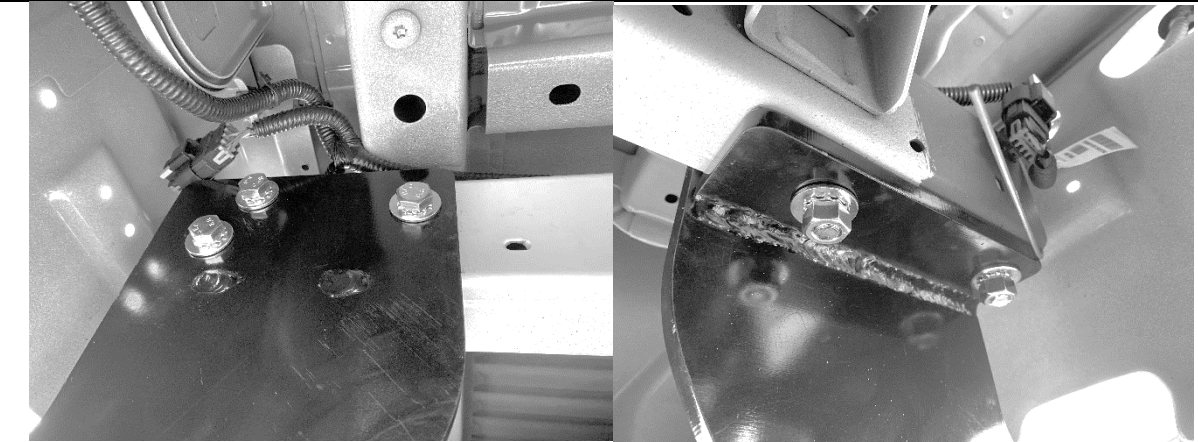
Instructions	Tools	Fasteners/Torques
<p>Unbolt 2x hex bolts from brackets on each side the Rear Step. Discard of 2x Brackets and set aside 4x bolts.</p>	Spanners/ Sockets	N/A

FITTING INSTRUCTIONS

LDV T60 – T7P702



Step 3 Attach Towbar End Plates



Instructions	Tools	Fasteners/Torques
<p>Loosely secure both towbar end plates to the chassis.</p> <ul style="list-style-type: none"> - Using 3x M12x1.75x40 Bolts, Flat and Shake Proof Washers in the captive nuts on the outside of each chassis rail - Using 1x M12x1.75x40 Bolt/Plate on Wire downwards through the forwardmost vertical hole in each chassis rail. Secure with Flat Washers, Shake Proof Washers and M12x1.75 Nuts. - Using 1x M12x1.75x40 Bolt and Plate downwards through the rearmost vertical hole in each chassis rail. Secure with Flat Washers, Shake Proof Washers and M12x1.75 Nuts. <p>Tighten the bolts to hold the end plates against the chassis rails. DO NOT tighten to torque spec.</p>	M12 Spanners/ Sockets	N/A

Step 4 Determine if Spacers are required



Instructions	Tools	Fasteners/Torques
<p>Position the Towbar centre section between the two end plates.</p> <p>If there is more than approx. 3mm clearance between the parts on each side, then spacers will be required.</p> <p>If the clearance is less than this, spacers will not be required between the parts.</p>	N/A	N/A

FITTING INSTRUCTIONS

LDV T60 – T7P702



Step 5 Secure Towbar Centre Section and Torque Bolts



Instructions

Using 4x M12x45 Bolts, Shake Proof Washers and Nuts, 8x M12 Flat Washers, and 1x Spacer (if required) per side. Loosely secure the towbar centre section between the end plates. Ensure centre section is right side up with the hitch receiver bellow the main cross-bar. When all hardware is in place, tighten **all** bolts (including those into the chassis rails) to the torque specified.

Tools

M12 Spanners/ Sockets
-Torque Wrench

Fasteners/Torques

M12 = 100Nm

Step 6 Refit the Rear Step



FITTING INSTRUCTIONS

LDV T60 – T7P702



Instructions	Tools	Fasteners/Torques
<p>Using 4x bolts set aside from step 2, loosely fasten the drivers and passengers side brackets to the Rear Step.</p> <p>With 2 people hold the Rear Step with Brackets attached up to the towbar. Loosely bolt the assembly to end plates of the towbar using 4x M10x1.5x35, M10 Shake Proof Washers and M10x1.5 Nuts with 8x M10 Flat Washers.</p> <p>When all hardware is in place, ensure the rear step is centred and at correct height on the vehicle and torque all bolts to specified torque specified.</p> <p>Ensure all wiring that was disconnected is reconnected.</p>	<p>M10 Spanners/ Sockets -Torque Wrench</p>	<p>M10 = 60Nm M12 = 100Nm</p>

Step 7 Apply Sticker to Door Jam



Instructions	Tools	Fasteners/Torques
<p>Apply Towbar info label to the inside of the driver's side door Jam.</p>	<p>N/A</p>	<p>N/A</p>

FITTING INSTRUCTIONS

LDV T60 – T7P702



WARRANTY STATEMENT

The manufacturer of TAG branded products, warrants your TAG Towbar for its full product life under the following conditions:

- You can show proof of purchase.
- The towbar has been correctly installed by a suitably qualified installer.
- The towbar has not been modified or abused in any way and has only been used for the purpose intended.
- The towbar was not fitted second hand to your vehicle.

The extent of this warranty includes materials and workmanship used in the manufacture of the towbar and is to the equivalent value of current, full replacement cost.

Nothing stated or implied in this warranty limits in any way, the statutory rights that you may have.

To make a claim visit the original installer in the first instance or, if you are unable to or are not satisfied with their help, then contact us direct by phone on 07 3208 3022
or via email qldsales@arandatowbars.com.au