

---

## NISSAN PATHFINDER

Wagon

10/2013-ON

---

### **Part number T4D605**

Maximum towing capacity 2700 kg

Maximum ball load 270 kg

Bar weight 21kg



Fit with wiring harness part No. XXXX

## Fitting Instructions

### **Warning:**

Safety First: Always use correct safety equipment.

This towbar is NOT to be drilled, cut, welded or modified in any way.

Check the surrounding area before drilling into chassis or body panels for fuel lines, wiring harnesses and other components that may be a hazard.

### **General:**

Before fitting this towbar read fitting instructions and check installation hardware is correct.

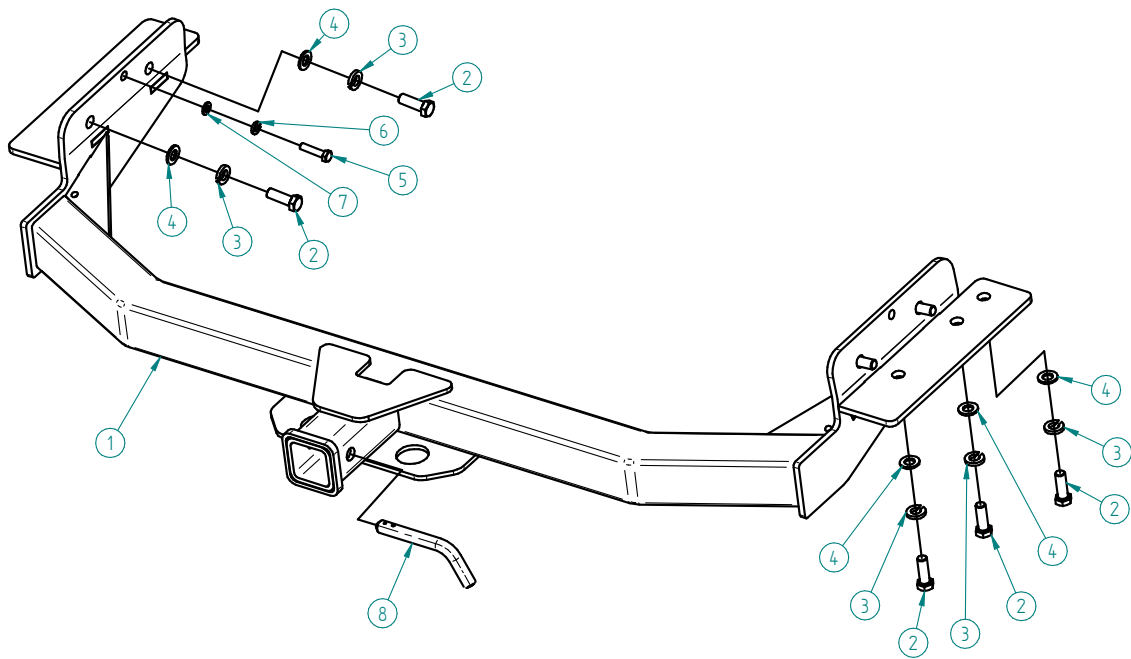
Check that the towbar is suitable for the vehicle and be wary of any changes to the vehicle design that may conflict with the fitting of this towbar.

After drilling, blow any filings clear, remove any swarf and treat exposed metal with a rust inhibitor.

If this vehicle requires a bumper cut out, please check to make sure that you measure twice and check twice before cutting any panels as some bumper profiles can change.

If you are not sure then ask your towbar supplier.

Tighten all bolts as specified on the last page.



NB! Discard all supplied nuts

Scheme1

T4D605 Hardware KIT	
Item	Quantity
1. Towbar	1
2. M12 x 35 x 1.25 pitch bolt	10
3. M12 spring washer	10
4. M12 flat washer	10
5. M8 x 25 x 1.25 pitch bolt	1
6. M8 spring washer	1
7. M8 flat washer	1
8. Class 4 pin	1
9. Clip for Class 4 pin	1
10. L4120 ballmount	1
11. Compliance plate	1
12. Door sticker	1

1.



Pic.1

1.1 Undo bolts A and B (discard bolt A) as shown on Pic.1

2.



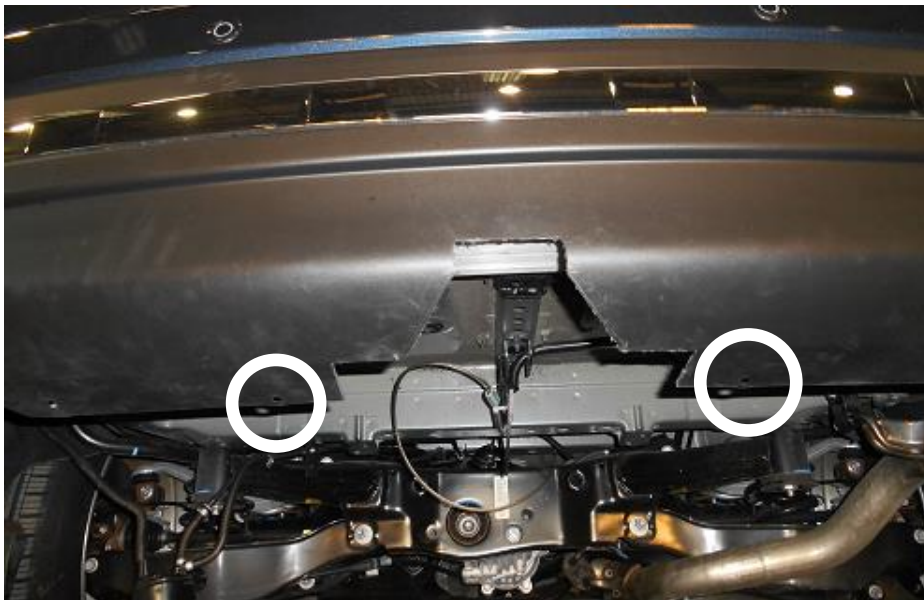
Pic.2

2.1 Remove and discard tow hook by undoing four bolts as shown on Pic.2

**3.**



Pic.3



Pic.4

3.1 Make the bumper cut out by using given measurements as shown on Pic.3

3.2 Measure from inside of given holes (measurement from inside of the hole to the other inside is approximately 500 mm), as shown on Pic.4

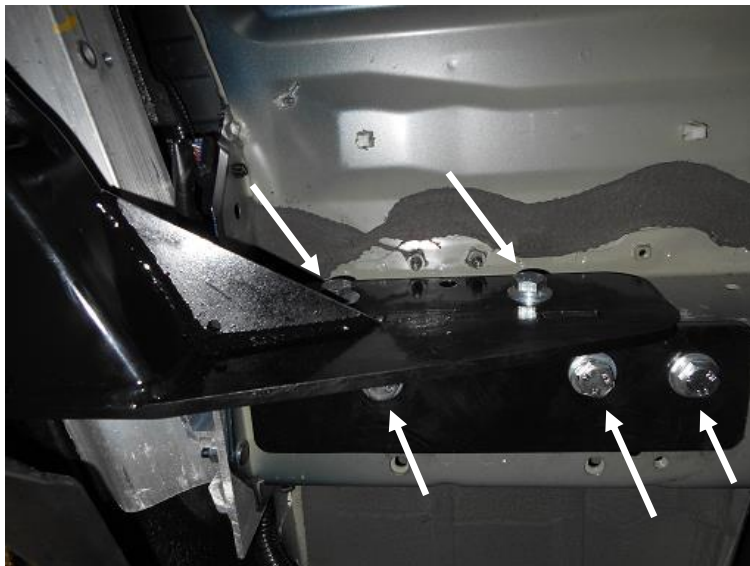
**4.**



Pic.5

4.1 Remove bumper bar bracket by undoing plastic scrivenets and bolts from both sides as shown on Pic.5

**5.**



Pic.6

5.1 Lift the towbar up between chassis rail and insert all bolts loosely as shown on Pic.6 and Scheme1

5.2 Tighten bolts as specified in the torque table



**6.**



Pic.7

6.1 Refit fuel filter bracket as shown on Pic.7

6.2 Use supplied M8 bolt, spring and flat washer as shown on Pic.7

**7.**



Pic.8

7.1 Refit the bumper bar bracket (insert plastic scrivet first trough the bracket)

7.2 Bend the bracket if necessary

**8.**

8.1 Fit supplied compliance plate to the towbar and door sticker inside of the driver's door pillar.

8.2 Mount the ball mount to the towbar

**Torque table for bolt tightening**

<b>Metric GRADE 8.8</b>	<b>UNC GRADE 8</b>
M6 – 12.5 Nm	3/8 – 50 Nm
M8 – 30 Nm	1/2 - 125 Nm
M10 – 60 Nm	5/8 – 245 Nm
M12 – 103 Nm	
M14 – 167 Nm	
M16 – 270 Nm	