

Make / Model FORD MONDEO/WAGON

Other

Year 9/09 ON

Part number T2F524

Maximum towing capacity 1600 kg

Maximum ball load 160 kg

Bar weight 16 kg

Fit with wiring harness part No. EL5540

Fitting Instructions

Warning:

Safety First: Always use correct safety equipment.

This towbar is NOT to be drilled, cut, welded or modified in any way.

Check the surrounding area before drilling into chassis or body panels for fuel lines, wiring harnesses and other components that may be a hazard.

General:

Before fitting this towbar read fitting instructions and check installation hardware is correct.

Check that the towbar is suitable for the vehicle and be wary of any changes to the vehicle design that may conflict with the fitting of this towbar.

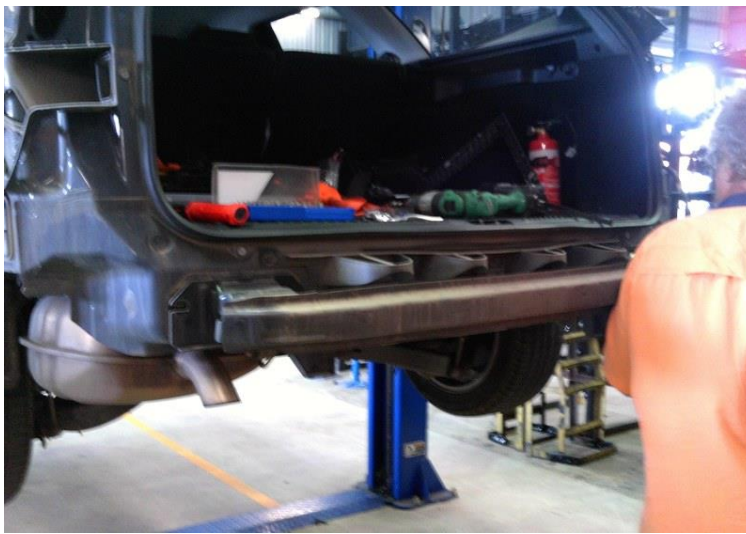
After drilling, blow any filings clear, remove any swarf and treat exposed metal with a rust inhibitor.

If this vehicle requires a bumper cut out, please check to make sure that you measure twice and check twice before cutting any panels as some bumper profiles can change.

If you are not sure then ask your towbar supplier.

Tighten all bolts as specified on the last page.

1. REMOVAL OF BUMPER.
 - 1.1. REMOVE ALL TORQUE SCREWS AND SCRIVETS FROM WHEEL ARCHS AND BOTTOM REAR OF BUMPER.
 - 1.2. REMOVE TORQUE SCREWS FROM TOP SIDE OF BUMPER/REMOVE TAIL LIGHTS.
 - 1.3. REMOVE BUMPER PULLING OUT AT SIDES FIRST THEN REARWARDS/PLACE ON STAND IF POSSIBLE.
 - 1.4. REMOVE IMPACT BEAM AND DISCARD.
2. INSTALL TOW BAR USING 8 X M8 BOLTS AND WASHERS INTO EXISTING CAPTIVE NUTS / RUN BOLTS IN BUT DON'T TIGHTEN UNTIL BOTTOM BOLT HAS BEEN INSTALLED.



- 2.1. INSTALL 2 X M10 BOLTS, PLATES AND WASHERS PROVIDED INTO UNDERSIDE REAR OF SUBFRAME USING EXISTING HOLES EACH SIDE
 - 2.2. REMOVE SPAREWHEEL /DRILL 11MM HOLE THROUGH CENTRE TAB INTO WHEEL WELL AND INSTALL M10 BOLT, PLATE, WASHERS AND NUT.
 - 2.3. TIGHTEN ALL BOLTS TO SPECIFIED RATINGS.
3. REFIT BUMPER ONTO VEHICLE/NO BUMPER CUT OUT REQUIRED.
 - 3.1. REFIT TAIL LIGHTS.
 - 3.2. FIT BALL MOUNT WITH 2 X M16 BOLTS AND WASHERS PROVIDED AND TIGHTEN.
 - 3.3. ATTACH RATINGS STICKER TO DRIVERS SIDE DOOR PILLAR.

Torque table for bolt tightening

Metric GRADE 8.8	UNC GRADE 8
M6 – 12.5 Nm	3/8 – 50 Nm
M8 – 30 Nm	1/2 - 125 Nm
M10 – 60 Nm	5/8 – 245 Nm
M12 – 103 Nm	
M14 – 167 Nm	
M16 – 270 Nm	