

# FITTING INSTRUCTIONS

Hyundai iLoad/iMax – T7Z726



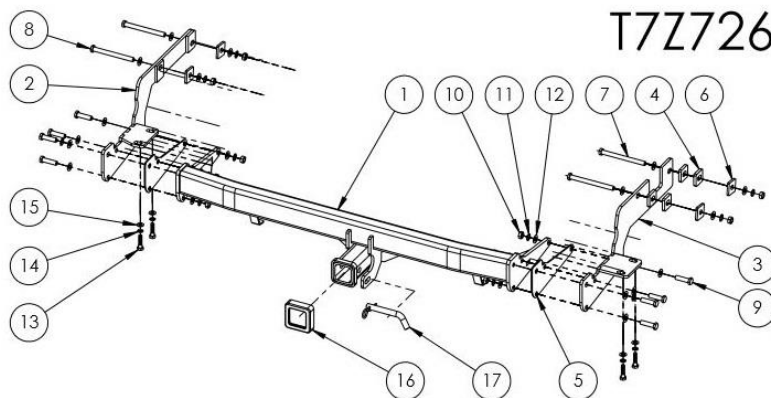
<b>Max Towing Capacity:</b> 2500kg	<b>Towbar Weight:</b> 25kg
<b>Max Ball Load:</b> 100kg	<b>Wiring Harness Part #:</b> UNT284



## Tools Required:

- Spanners, Sockets, Torque Wrench, Screwdrivers, Trim Removal tools, Air Saw

Kit Contents					
Item No.	Description	Qty	Item No.	Description	Qty
1.	Towbar Centre Section	1	11.	M12 Shake Proof Washer	12
2.	End Plate Subassembly PS	1	12.	M12 Flat Washer	22
3.	End Plate Subassembly DS	1	13.	M10x1.25x40 Bolt	4
4.	DS Chassis Spacer 8mm	4	14.	M10 Shake Proof Washer	4
5.	Spacer 3mm	2	15.	M10 Flat Washer	4
6.	Chassis Plate 6mm	4	17.	Hitch Collar Cover	1
7.	M12x1.75x140 Bolt	2	18.	Pin & Clip	1
8.	M12x1.75x130 Bolt	2	-	D-Shackles	2
9.	M12x1.75x45 Bolt	8	-	Compliance Sticker	1
10.	M12x1.75 Nut	10			



## Warning:

- This product is for towing purposes only and must only be loaded as shown in your vehicle Owners Manual.
- This towbar is NOT to be drilled, cut, welded or modified in any way.
- Check behind chassis rail and body panels before drilling to ensure no hazards are present

## General:

- Before fitting this towbar read fitting instructions and check installation hardware is correct.
- Check that the towbar is suitable for the vehicle and be wary of any changes to the vehicle design that may conflict with the fitting of this towbar.
- After drilling, blow any filings clear, remove any swarf and treat exposed metal with a rust inhibitor.
- If this vehicle requires a bumper cut out, please check to make sure that you measure twice and check twice before cutting any panels as some bumper profiles can change. If you are not sure, then please ask your towbar supplier

# FITTING INSTRUCTIONS

Hyundai iLoad/iMax – T7Z726



## Step 1 Remove Rear Bumper & Impact Beam



Instructions	Tools	Torque Spec
<p>Remove screws and plastic rivets securing the rear bumper. These are located inside each wheel well, underneath the bumper behind each wheel, along the bottom each of the bumper and behind the trim in the rear door jam.</p> <p>Carefully with 2 people, unclip the bumper from the vehicle and set aside with all the screws and rivets for reattachment.</p> <p>Remove 2x bolts from the underside of each chassis rail to remove the impact beam. These parts can be discarded of as they will not be reattached.</p> <p>Lower the spare tire to allow for extra space if necessary</p>	<p>Spanners, Sockets, Trim Removal Tools, Screwdrivers</p>	<p>NA</p>

# FITTING INSTRUCTIONS

Hyundai iLoad/iMax – T7Z726



## Step 2 | Fit Towbar End Plates



Instructions	Tools	Torque Spec
<p>Loosely secure both towbar end plates to the chassis.</p> <ul style="list-style-type: none"> <li>- On the driver's side, use 2x M12x140 Bolts and flat washers, with 2x8mm chassis plates on each bolt between the end plate and chassis rail. Fasten on the other side with M12 Nuts, Flat and Shake Proof Washers and 6mm chassis plates.</li> <li>- On the passenger side, use 2x M12x130 Bolts and flat washers. Fasten on the other side with M12 Nuts, Flat and Shake Proof Washers and 6mm chassis plates.</li> </ul> <p>Tighten the bolts to hold the end plates against the chassis rails. <b>DO NOT tighten to torque spec.</b></p> <p><b>Determine if spacer are required:</b> Position the Towbar centre section between the two end plates. If there is more than approx. 3mm clearance between the parts on each side, then spacers will be required. If the clearance is less than this, spacers will not be required between the parts.</p>	<ul style="list-style-type: none"> <li>- Spanners/Sockets</li> </ul>	<p>NA</p>

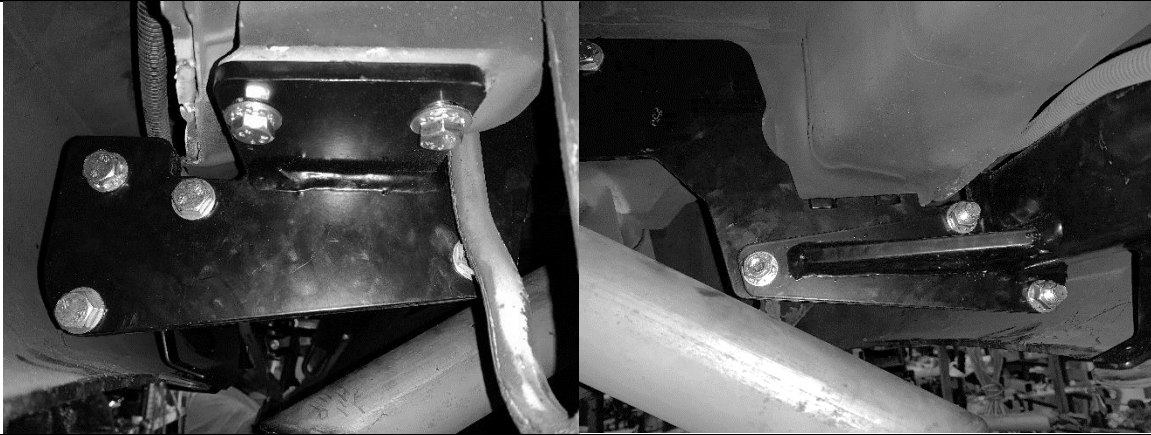


# FITTING INSTRUCTIONS

Hyundai iLoad/iMax – T7Z726

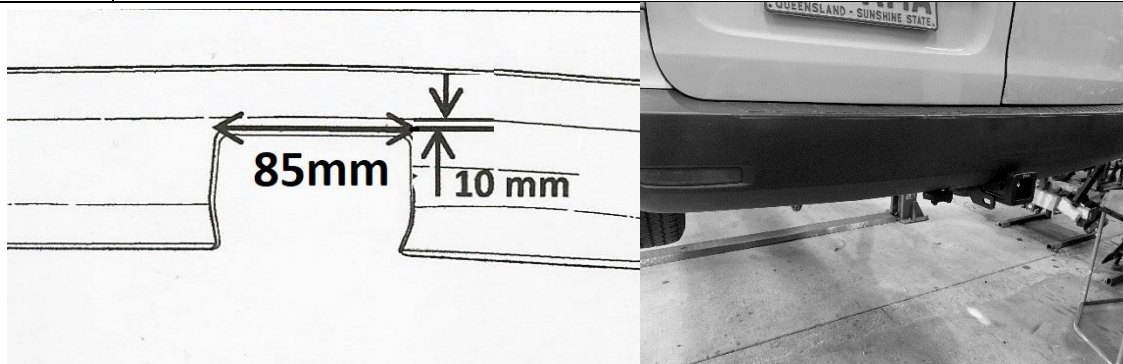


## Step 4 | Secure Towbar Centre Section & Torque Bolts



Instructions	Tools	Torque Spec
<p>Using 4x M12x45 Bolts, Shake Proof Washers, 3xM12 Nuts, 6x M12 Flat Washers, and 1x Spacer (if required) per side. Loosely secure the towbar centre section between the end plates. Ensure centre section is right side up with the hitch receiver below the main cross-bar. When all hardware is in place, tighten all bolts (including those into the chassis rails) to the torque specified.</p>	<p>- Spanner/Sockets, Torque Wrench</p>	<p>M12 = 100Nm</p>

## Step 5 | Perform Bumper Cut & Refit Rear Bumper



Instructions	Tools	Torque Spec
<p>Find the bumper centreline and carefully perform bumper cut as indicated in the diagram above. Please note this is only an indication, bumpers can vary between models and the fitter should take their own measurements.</p> <p>Refit the rear bumper using fasteners removed in step 1.</p>	<p>Air Saw or Similar, Screw Drivers</p>	<p>NA</p>

# FITTING INSTRUCTIONS

Hyundai iLoad/iMax – T7Z726



## Step 6 | Apply door sticker



Instructions	Tools	Torque Spec
Apply Towbar info label to the inside of the driver's side door Jam.	N/A	N/A



## WARRANTY STATEMENT

The manufacturer of TAG branded products, warrants your TAG Towbar for its full product life under the following conditions:

- You can show proof of purchase.
- The towbar has been correctly installed by a suitably qualified installer.
- The towbar has not been modified or abused in any way and has only been used for the purpose intended.
- The towbar was not fitted second hand to your vehicle.

The extent of this warranty includes materials and workmanship used in the manufacture of the towbar and is to the equivalent value of current, full replacement cost.

Nothing stated or implied in this warranty limits in any way, the statutory rights that you may have.

To make a claim visit the original installer in the first instance or, if you are unable to or are not satisfied with their help, then contact us directly by email at [warranty@tagtowing.com](mailto:warranty@tagtowing.com)