

FITTING INSTRUCTIONS

Holden Colorado – T7H722



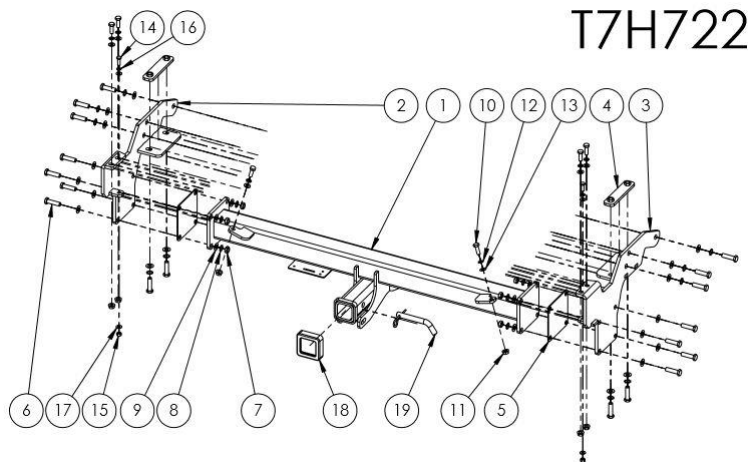
Max Towing Capacity: 3500kg	Towbar Weight: Approx. 30kg
Max Ball Load: 350kg	Wiring Harness Part #: 750024EJ



Tools Required:

Spanners/Sockets, Torque Wrench, Trim Removal Tools

Kit Contents					
Item No.	Description	Qty	Item No.	Description	Qty
1.	Towbar Centre Section	1	12.	M10 Shake proof washer	6
2.	End Plate Subassembly PS	1	13.	M10 Flat Washer	6
3.	End Plate Subassembly DS	1	14.	M8x1.25x25 Bolts	2
4.	Chassis Plate with Nuts	2	15.	M8x1.25 Nuts	2
5.	Spacer 3mm	1	16.	M8 Shake Proof Washer	2
6.	M12x1.25x45 Bolts	18	17.	M8 Flat Washer	4
7.	M12x1.25 Nuts	8	18.	Hitch Collar Cover	1
8.	M12 Shake Proof Washer	18	19.	Pin and Clip	1
9.	M12 Flat Washer	26	-	D-Shackles	2
10.	M10x1.5x30 Bolt	6	-	Compliance Sticker	1
11.	M10x1.5 Flange Nut	6



Warning:

- This product is for towing purposes only and must only be loaded as shown in your vehicle Owners Manual.
- This towbar is NOT to be drilled, cut, welded or modified in any way.
- Check behind chassis rail and body panels before drilling to ensure no hazards are present

General:

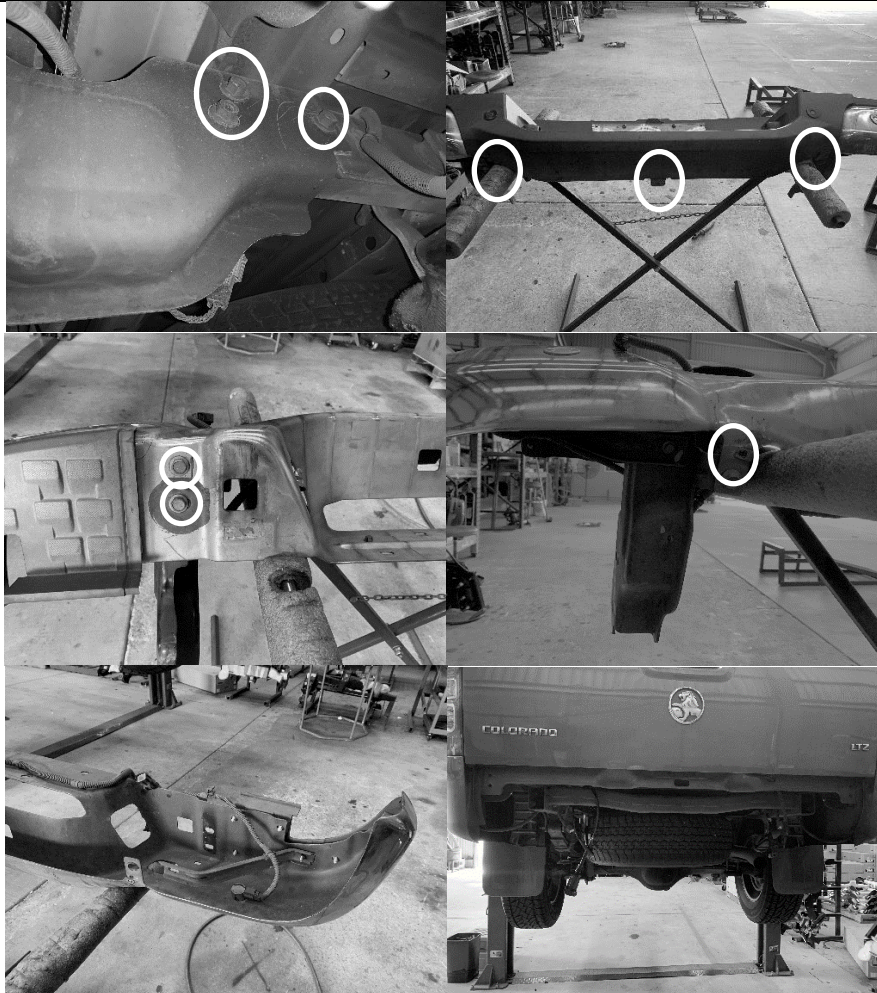
- Before fitting this towbar read fitting instructions and check installation hardware is correct.
- Check that the towbar is suitable for the vehicle and be wary of any changes to the vehicle design that may conflict with the fitting of this towbar.
- After drilling, blow any filings clear, remove any swarf and treat exposed metal with a rust inhibitor.
- If this vehicle requires a bumper cut out, please check to make sure that you measure twice and check twice before cutting any panels as some bumper profiles can change. If you are not sure, then please ask your towbar supplier

FITTING INSTRUCTIONS

Holden Colorado – T7H722



Step 1 | Remove and Strip Rear Bumper/Step



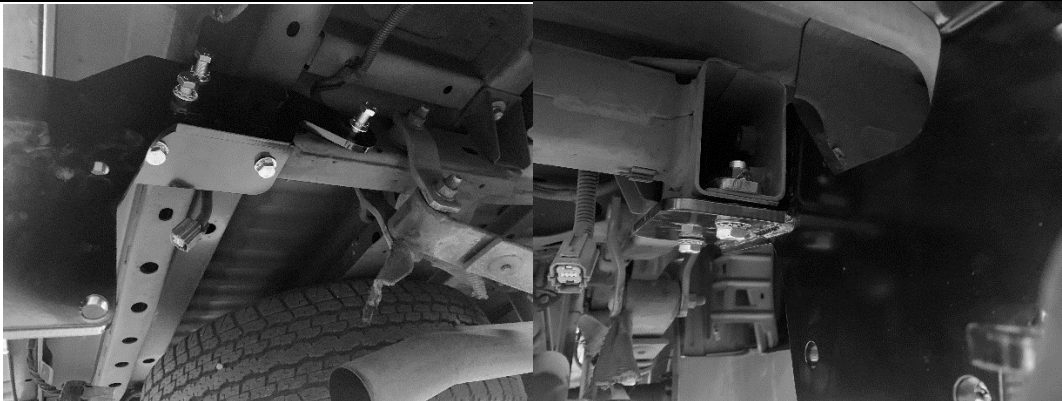
Instructions	Tools	Torque Spec
<p>Unplug any wiring connected to the rear bumper. Remove 3x M12 bolts securing the bumper to the chassis on each side. With 2 people carefully supporting the bumper, slide it backwards and downwards to remove from the vehicle.</p> <p>Unscrew 3 screws on the lower edge of the plastic trim fixing it to the bumper (keep 2 of these). Ensure the number plate lights and 2 inner reverse sensors are unplugged. Carefully unclip the plastic trim from the bumper.</p> <p>Unbolt 3 bolts on each side to remove the bumper brackets from the bumper. Discard of the brackets and bolts. Leave the thinner angled bracket attached to the bumper.</p>	<ul style="list-style-type: none"> - Spanners, Sockets - Trim Removal Tools 	<p>NA</p>

FITTING INSTRUCTIONS

Holden Colorado – T7H722

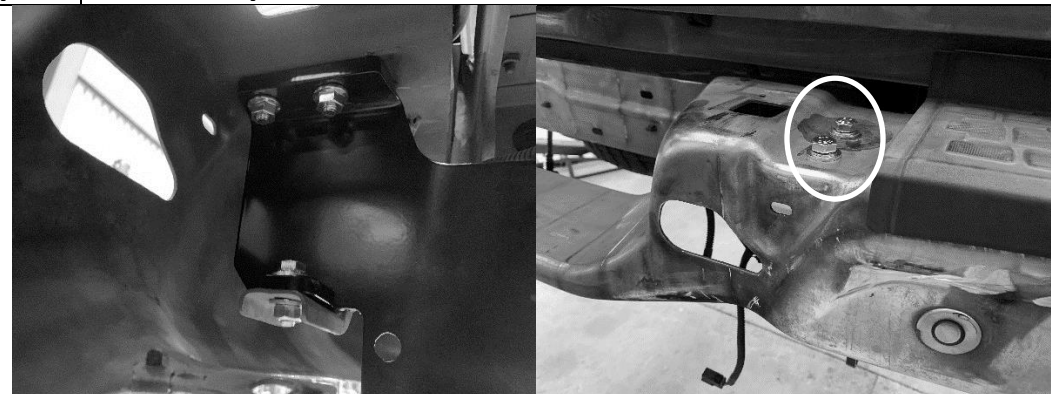


Step 2 | Fit Towbar End Plates



Instructions	Tools	Torque Spec
<p>Loosely secure both towbar end plates to the chassis.</p> <ul style="list-style-type: none"> - Using 3x M12 Bolts, Flat and Shake Proof Washers into the captive nuts in the side of each chassis rail - Using 2x M12 Bolts, Flat and Shake Proof Washers and the Chassis Plate with Nuts through the holes in the bottom of each chassis rail. <p>Tighten the bolts to hold the end plates against the chassis rails. DO NOT tighten to torque spec.</p>	<p>- Spanners, sockets</p>	<p>NA</p>

Step 3 | Refit bumper Bar




Instructions	Tools	Torque Spec
<p>Carefully with 2 people, lift and slide rear bumper back onto the vehicle over the towbar end plates.</p> <ul style="list-style-type: none"> - Use 2x M10 bolts, shake proof washers, flat washers and flange nuts to fix the bumper to each end plate through the top holes in the end plate. Ensure the bolt head is on the top side. - Use 1x M8 bolt, shake proof washer and nut and 2x flat washers to fix the bumper (thin angled bracket) to each end plate through the bottom holes in the end plate. 	<p>- Spanners, Sockets</p>	<p>NA</p>

FITTING INSTRUCTIONS



Holden Colorado – T7H722



Step 4 Determine if Spacers are required

		
<p>Instructions</p> <p>Position the Towbar centre section between the two end plates.</p> <p>If there is more than approx. 3mm clearance between the parts on each side, then spacers will be required. If the clearance is less than this, spacers will not be required between the parts.</p>	<p>Tools</p> <p>NA</p>	<p>Torque Spec</p> <p>NA</p>

Step 5 Secure Towbar Centre Section and Fix to bumper

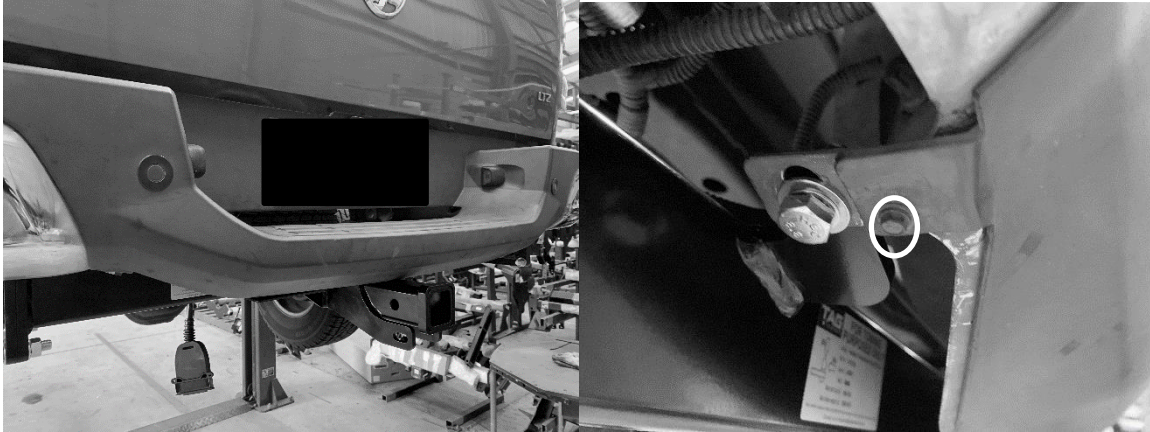
		
<p>Instructions</p> <p>Using 4x M12x45 Bolts, Shake Proof Washers and Bolts, 8x M12 Flat Washers, and 1x Spacer (if required) per side. Loosely secure the towbar centre section between the end plates. Ensure centre section is right side up with the hitch receiver below the main cross-bar.</p> <p>Also use 1x M10 Bolt, Shake proof washer, flat washer and flange nut each side to fix the bumper to the angled mounting point on the towbar centre section</p> <p>When all hardware is in place, tighten all bolts (including those into the chassis rails) to the torque specified.</p>	<p>Tools</p> <p>- Spanners, Sockets, Torque Wrench</p>	<p>Torque Spec</p> <p>M12 = 100NM M10 = 60NM M8 = 30NM</p>

FITTING INSTRUCTIONS

Holden Colorado – T7H722



Step 6 Refit bumper Bar Skin



Instructions	Tools	Torque Spec
Clip plastic trim back on to the bumper using all the points removed in step 1. Fix the bottom edge of the bumper using 2 of the screws removed previously near the angled mounting points. Reconnect the number plate lights and reversing sensors and any wiring disconnected in step 1.	- Spanners, Sockets	NA

Step 7 Apply door sticker



Instructions	Tools	Torque Spec
Apply Towbar info label to the inside of the driver's side door Jam.	N/A	N/A

FITTING INSTRUCTIONS

Holden Colorado – T7H722



WARRANTY STATEMENT

The manufacturer of TAG branded products, warrants your TAG Towbar for its full product life under the following conditions:

- You can show proof of purchase.
- The towbar has been correctly installed by a suitably qualified installer.
- The towbar has not been modified or abused in any way and has only been used for the purpose intended.
- The towbar was not fitted second hand to your vehicle.

The extent of this warranty includes materials and workmanship used in the manufacture of the towbar and is to the equivalent value of current, full replacement cost.

Nothing stated or implied in this warranty limits in any way, the statutory rights that you may have.

To make a claim visit the original installer in the first instance or, if you are unable to or are not satisfied with their help, then contact us directly by email at warranty@tagtowing.com