

KIA CERATO

HATCH

2015-ON

Part number T2K633

Maximum towing capacity 1200 kg

Maximum ball load 75 kg

Bar weight 13.5 kg

Fit with wiring harness part No. xxxxx

Fitting Instructions

Warning:

Safety First: Always use correct safety equipment.

This towbar is NOT to be drilled, cut, welded or modified in any way.

Check the surrounding area before drilling into chassis or body panels for fuel lines, wiring harnesses and other components that may be a hazard.

General:

Before fitting this towbar read fitting instructions and check installation hardware is correct.

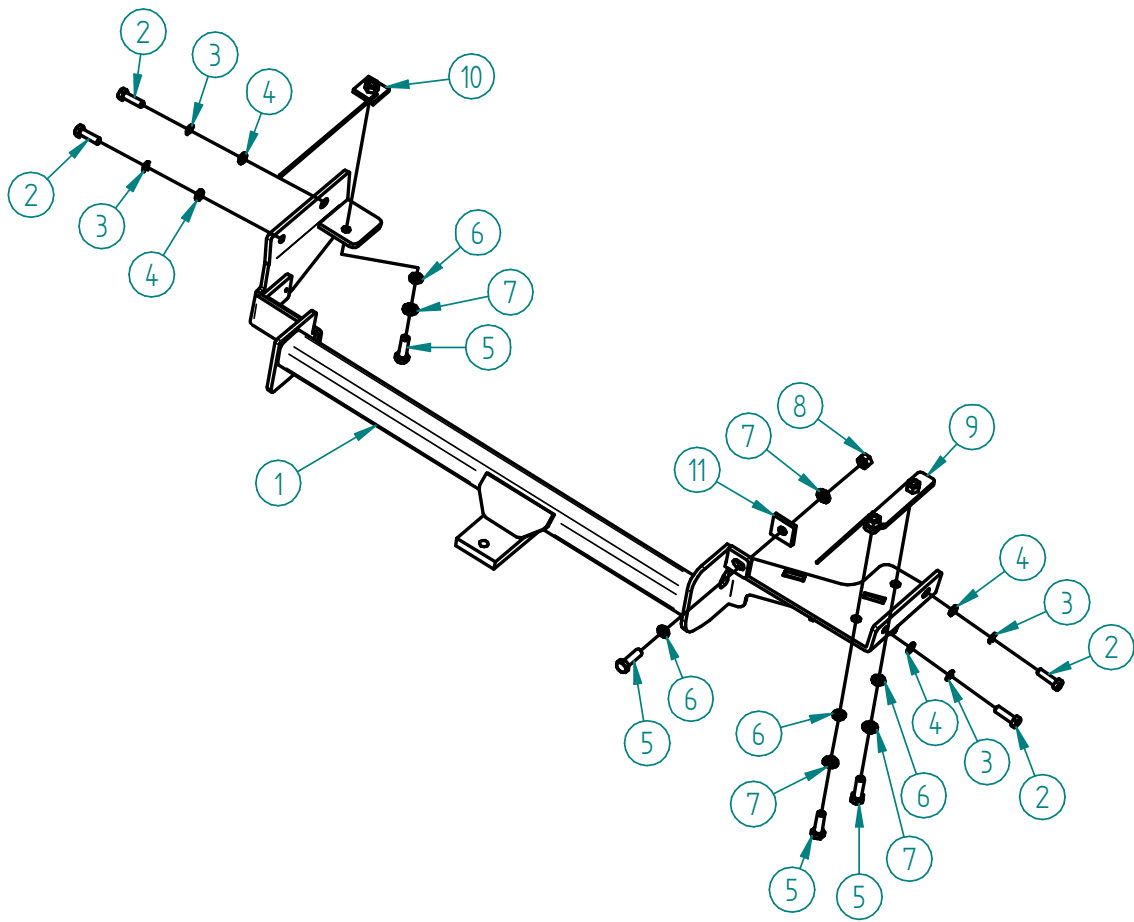
Check that the towbar is suitable for the vehicle and be wary of any changes to the vehicle design that may conflict with the fitting of this towbar.

After drilling, blow any filings clear, remove any swarf and treat exposed metal with a rust inhibitor.

If this vehicle requires a bumper cut out, please check to make sure that you measure twice and check twice before cutting any panels as some bumper profiles can change.

If you are not sure then ask your towbar supplier.

Tighten all bolts as specified on the last page.



Scheme 1

T2K633 Hardware KIT	
Item	Quantity
1. Towbar	1
2. M10 x 35 x 1,25 pitch bolt	4
3. M10 star washer	4
4. M10 flat washer	4
5. M12 x 40 x 1.25 pitch bolt	4
6. M12 flat washer	4
7. M12 star washer	4
8. M12 x 1.25 nut	1
9. Nut plate	1
10. Nut plate	1
11. Spacer plate	1
12. L264E lug	1
13. Compliance plate	1
14. Door sticker	1

1.



Pic.1.1



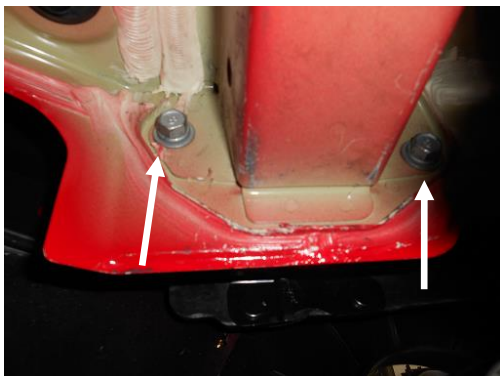
Pic.1.2

1.1 Remove tail lights by undoing screws as shown on Pic.1.1

1.2 Pull taillights straight forwards out and remove plugs as shown on Pic.1.2

1.3 Remove plastic scrivets as shown on Pic.1.2

2.



Pic.2.1



Pic.2.2

2.1 For bumper bar removal undo two bolt from the inside of rear panel as shown on Pic.2.1

2.2 Remove plastic scrivets and screw as shown on Pic.2.2

2.3 Undo reversing sensor plug (when fitted)

3.



Pic.3.1



Pic.3.2

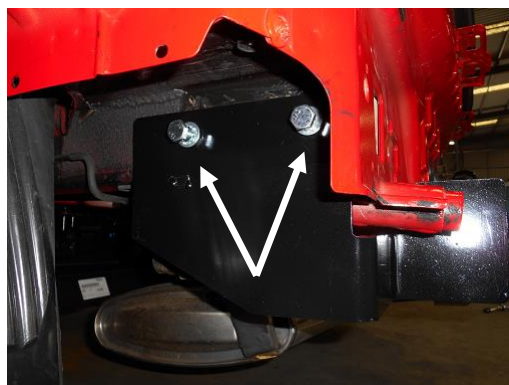
3.1 Remove plastic cover as shown on Pic.3.1

3.2 Undo exhaust from exhaust rubber as shown on Pic.3.2

4.



Pic.4.1



Pic.4.2

4.1 Slide the towbar against chassis rails and insert fasteners as shown on Pic.4.1; Pic.4.2 and Scheme1

4.2 Mark and drill holes underneath the chassis rails

5.



Pic.5.1



Pic.5.2

5.1 Slide Nut plate (Item 10. in Hardware KIT) into the passenger's side chassis rail as shown on Pic.5.1

5.2 Slide Nut plate (Item 9. in Hardware KIT) into the driver's side chassis rail as shown on Pic.5.2

5.3 Insert and tighten all bolts loosely as shown on Scheme1

5.4 Tighten all bolts as specified on the torque table

6.



Pic.6

6.1 Remove and discard centre bumper bracket as shown on Pic.6

7.

7.1 Make the bumper cut out

8

7.1 Fit door sticker inside of the driver's door pillar.

7.2 Refit exhaust, impact beam, bumper bar and tail lights in reverse order

7.3 Fit lug to the towbar

Torque table for bolt tightening

Metric GRADE 8.8	UNC GRADE 8
M6 – 12.5 Nm	3/8 – 50 Nm
M8 – 30 Nm	1/2 - 125 Nm
M10 – 60 Nm	5/8 – 245 Nm
M12 – 103 Nm	
M14 – 167 Nm	
M16 – 270 Nm	