

IVECO DAILY

4X4

2013-ON

Part number T4P621

Maximum towing capacity 3500 kg

Maximum ball load 350 kg

Bar weight 27 kg



Fit with wiring harness part No. xxxxxx

Warning:

Safety First: Always use correct safety equipment.

This towbar is NOT to be drilled, cut, welded or modified in any way.

Check the surrounding area before drilling into chassis or body panels for fuel lines, wiring harnesses and other components that may be a hazard.

General:

Before fitting this towbar read fitting instructions and check installation hardware is correct.

Check that the towbar is suitable for the vehicle and be wary of any changes to the vehicle design that may conflict with the fitting of this towbar.

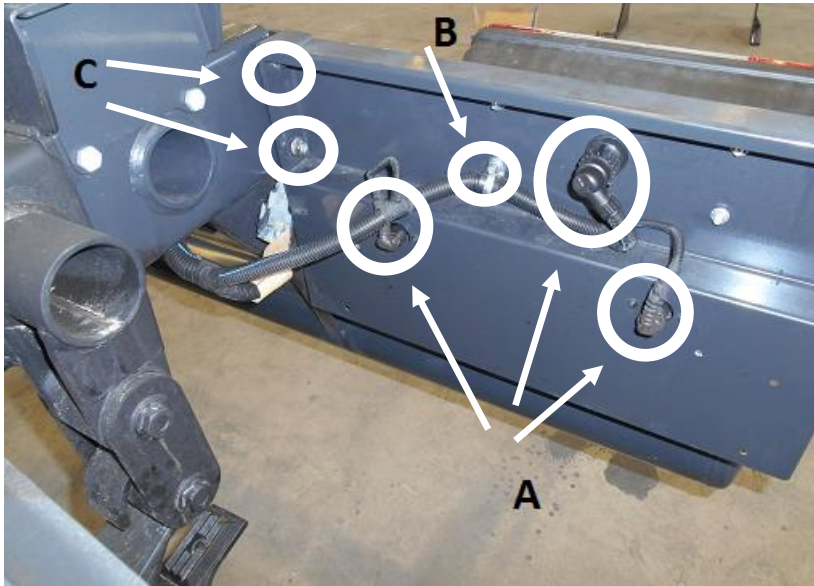
After drilling, blow any filings clear, remove any swarf and treat exposed metal with a rust inhibitor.

If this vehicle requires a bumper cut out, please check to make sure that you measure twice and check twice before cutting any panels as some bumper profiles can change.

If you are not sure then ask your towbar supplier.

Tighten all bolts as specified on the last page.

1.



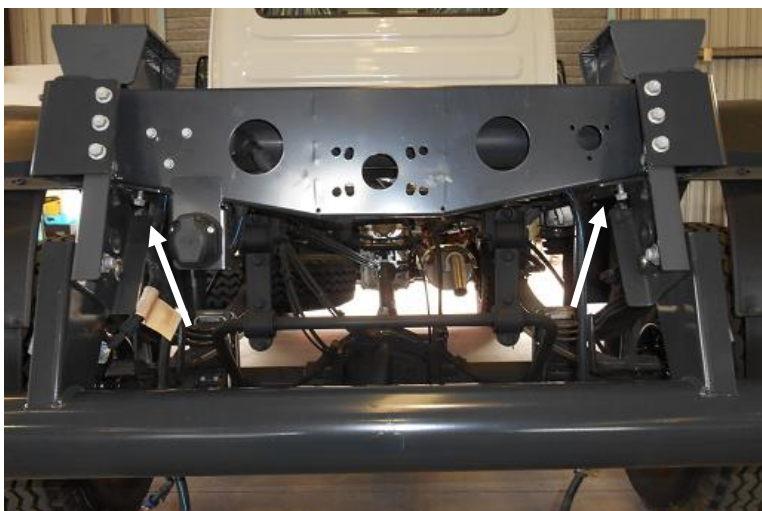
Pic.1

1.1 Undo tail light plugs A as shown on Pic.1

1.2 Undo tail light harness bracket B as shown on Pic.1

1.3 Undo tail light bolt nuts C as shown on Pic.1 and remove tail lights

2.



Pic.2

2.1 Undo two bolts and discard protector bar as shown on Pic.2

3.



Pic.3

3.1 Undo tail light plug as shown on Pic.3

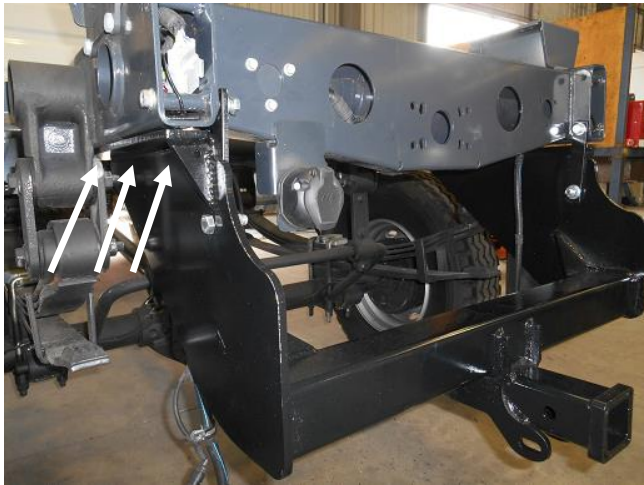
4.



Pic.4

4.1 Mount Support plates as shown on Pic.4

5.



Pic.5

5.1 Use Support plate as shown on Scheme 1 and Pic.4 to secure towbar and mark holes as shown on Pic.5

5.2 Check into chassis rails for wiring harnesses and other components that may be a hazard (**wiring harness in the Passenger side chassis rail**)

5.3 Drill holes into chassis rails

6.



Pic.6.1



Pic.6.2

6.1 Insert Nut plates as shown on Pic.6.1; Pic.6.2

6.2 Tighten bolts loosely

6.3 Refit tail lights in reverse order (use supplied fasteners)

6.4 Tighten all bolts as specified in torque table

7.

7.1 Fit supplied compliance plate to the towbar and door sticker inside of the driver's door pillar

Torque table for bolt tightening

Metric GRADE 8.8	UNC GRADE 8
M6 – 12.5 Nm	3/8 – 50 Nm
M8 – 30 Nm	1/2 - 125 Nm
M10 – 60 Nm	5/8 – 245 Nm
M12 – 103 Nm	
M14 – 167 Nm	
M16 – 270 Nm	