

## FORD TRANSIT

## VAN

## 94 - ON

### **Part number T4F623**

Maximum towing capacity 3000 kg

Maximum ball load 300 kg

Bar weight 18 kg



Fit with wiring harness part No.

# Fitting Instructions

### **Warning:**

Safety First: Always use correct safety equipment.

This towbar is NOT to be drilled, cut, welded or modified in any way.

Check the surrounding area before drilling into chassis or body panels for fuel lines, wiring harnesses and other components that may be a hazard.

### **General:**

Before fitting this towbar read fitting instructions and check installation hardware is correct.

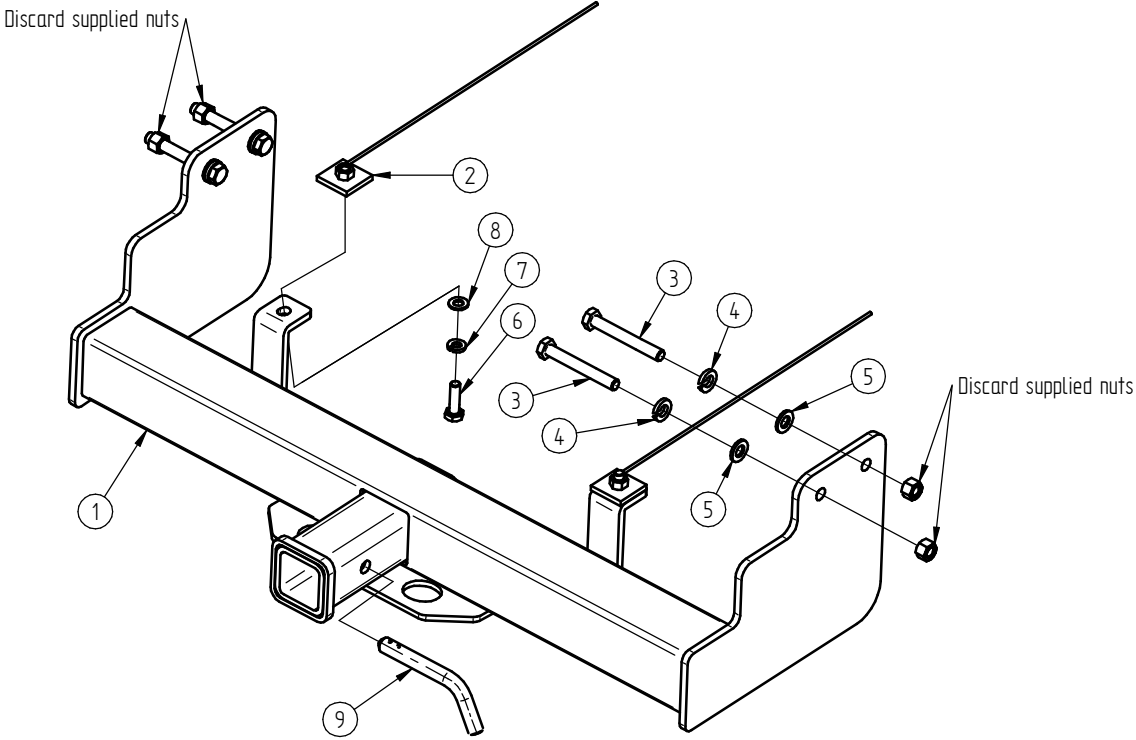
Check that the towbar is suitable for the vehicle and be wary of any changes to the vehicle design that may conflict with the fitting of this towbar.

After drilling, blow any filings clear, remove any swarf and treat exposed metal with a rust inhibitor.

If this vehicle requires a bumper cut out, please check to make sure that you measure twice and check twice before cutting any panels as some bumper profiles can change.

If you are not sure then ask your towbar supplier.

Tighten all bolts as specified on the last page.



Scheme1

T4F623 Hardware KIT	
Item	Quantity
1. Towbar	1
2. Nut plate	2
3. M12 x 100 x 1.75 pitch bolt	4
4. M12 spring washer	4
5. M12 flat washer	4
6. M10 x 35 x 1.5 pitch bolt	2
7. M10 spring washer	2
8. M10 flat washer	2
9. Class 4 Pin	1
10. Clip for Class 4 pin	1
11. L4045 ballmount	1
12. Spacer plate	2
13. M8 x 35 x 1.25 pitch bolt	1
14. M8 flat washer	1
15. M8 spring washer	1
16. Compliance plate	1
17. Door sticker	1

**1.**



Pic.1

1.1 Remove and discard bolts from both sides as shown on Pic.1

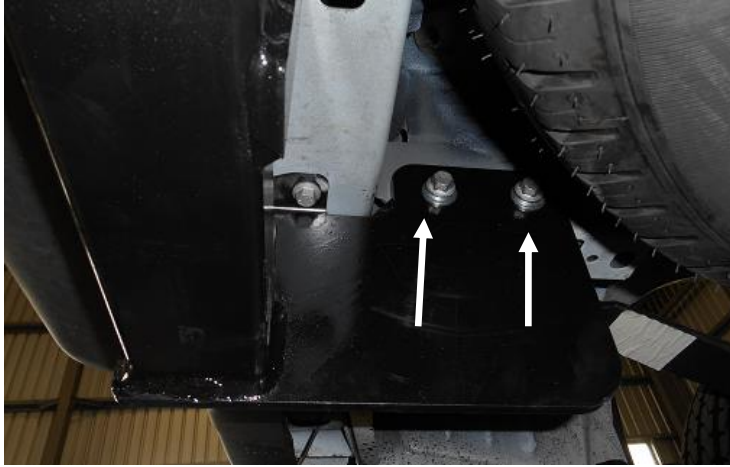
**2.**



Pic.2

2.1 Undo bolt as shown on Pic.2

### 3.



Pic.3

3.1 Lift the towbar up between chassis rails and insert bolt as shown on Pic.3 and Scheme1

3.2 Tighten bolts loosely

### 4.



Pic.4.1



Pic.4.2

4.1 Slide Nut plate (Item 2 in Hardware KIT list) into the panel as shown on Pic.4.1 and Pic.4.2

## 5.



Pic.5

5.1 Remove exhaust pipe bracket bolt and discard as shown on Pic.5

5.2 Use two Spacer plates (Item 12 in Hardware KIT list) and M8 bolt, M8 spring washer and a M8 flat washer (Items 13; 14; 15 in Hardware KIT list) to retighten the exhaust pipe bracket as shown on Pic.5

5.3 Tighten all bolts as specified on the torque table

## 6.

6.1 Fit supplied compliance plate to the towbar and door sticker inside of the driver's door pillar.

6.2 Retighten bolt in the rear panel as shown on Pic.2

6.3 Mount the ball mount to the towbar

## Torque table for bolt tightening

Metric GRADE 8.8	UNC GRADE 8
M6 – 12.5 Nm	3/8 – 50 Nm
M8 – 30 Nm	1/2 - 125 Nm
M10 – 60 Nm	5/8 – 245 Nm
M12 – 103 Nm	
M14 – 167 Nm	
M16 – 270 Nm	