
Volkswagen Golf

Hatch

(2013-ON)

Part number T2P620

Maximum towing capacity 1600 kg

Maximum ball load 160 kg

Bar weight 11.5 kg



Fit with wiring harness part No. EL5541

Fitting Instructions

Warning:

Safety First: Always use correct safety equipment.

This towbar is NOT to be drilled, cut, welded or modified in any way.

Check the surrounding area before drilling into chassis or body panels for fuel lines, wiring harnesses and other components that may be a hazard.

General:

Before fitting this towbar read fitting instructions and check installation hardware is correct.

Check that the towbar is suitable for the vehicle and be wary of any changes to the vehicle design that may conflict with the fitting of this towbar.

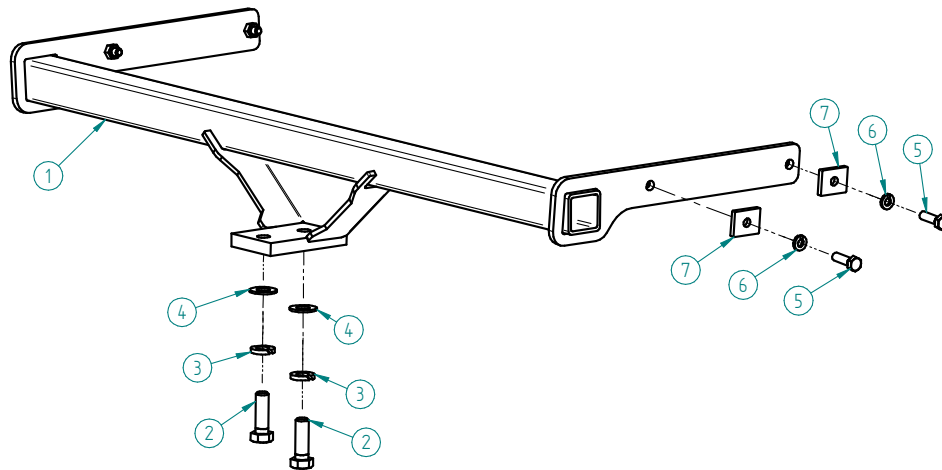
After drilling, blow any filings clear, remove any swarf and treat exposed metal with a rust inhibitor.

If this vehicle requires a bumper cut out, please check to make sure that you measure twice and check twice before cutting any panels as some bumper profiles can change.

If you are not sure then ask your towbar supplier.

Tighten all bolts as specified on the last page.

VW GOLF HATCH (2013-ON)



Scheme1

T2P620 Hardware KIT	
Item	Quantity
1. Towbar	1
2. M16 x 50 bolt	2
3. M16 spring washer	2
4. M16 flat washer	2
5. M10 x 35 x 1.5 pitch bolt	4
6. M10 spring washer	4
7. Plate	4
8. L233C tongue	1
9. Compliance plate	1
10. Door sticker	1

VW GOLF HATCH (2013-ON)

1.



Pic.1

1.1 Remove spare wheel

1.2 Remove rear beaver panel inner boot trim, pull it upwards (boot trim is attached only with clips)

2.



Pic.2

2.1 Remove hex screws A and B as shown on Pic.2

3.



Pic.3

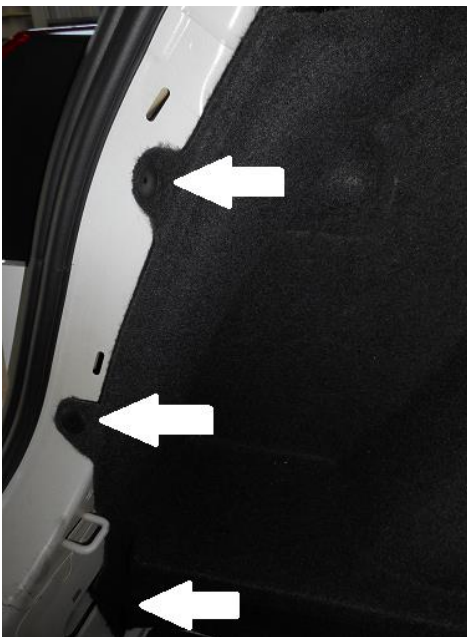


Pic.4

3.1 Pull passenger side internal plastic panel away as shown on Pic.3

3.2 When undoing drivers side panel, remove boot light plug as shown on Pic.4

4.



Pic.5

4.1 Remove plastic scrivenets as shown on Pic.5

VW GOLF HATCH (2013-ON)

5.



Pic.6

5.1 Remove tail light plug as shown on Pic.6

5.2 Unscrew tail light tensioner and remove tail light

6.



Pic.7



Pic.8

6.1 Remove hex screws as shown on Pic.7 and Pic.8

7.



Pic.9

7.1 Undo hex screws and remove plastic clips as shown on Pic.9

7.2 Remove bumper bar

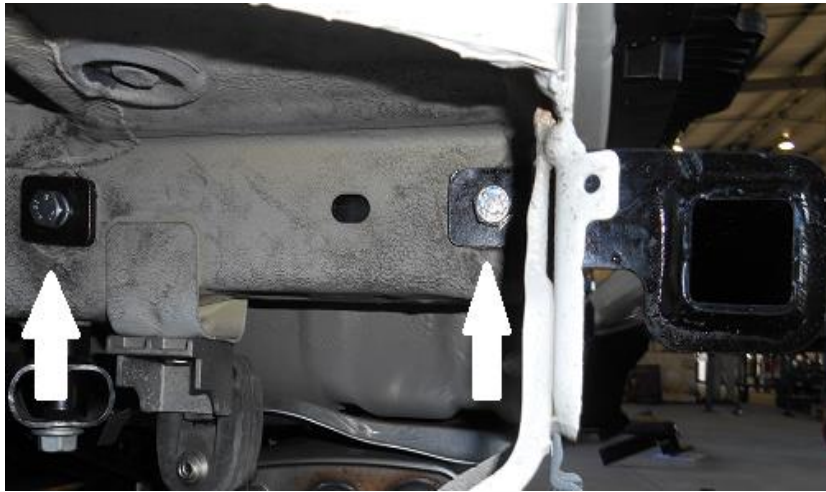
8.



Pic.10

8.1 Slide towbar end plates into chassis rail

9.

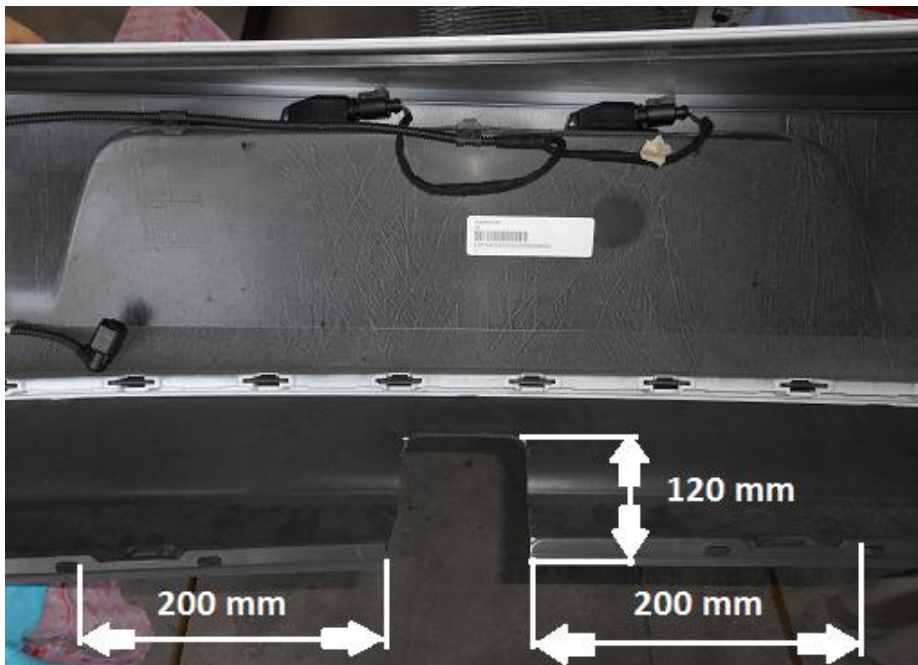


Pic.11

9.1 Tighten bolts as shown on Pic.11 and Scheme 1

9.2 Tighten bolts with the torque wrench

10.



Pic.12

10.1 Make the cut out in the bumper bar with given measurements

11.

11.1 Fit supplied compliance plate to the towbar and door sticker inside of the driver's door pillar.

11.2 Refit the bumper bar and tail lights in reverse order

11.3 Mount the lug mount to the towbar

Torque table for bolt tightening

Metric GRADE 8.8	UNC GRADE 8
M6 - 12.5 Nm	3/8 - 50 Nm
M8 - 30 Nm	1/2 - 125 Nm
M10 - 60 Nm	5/8 - 245 Nm
M12 - 103 Nm	
M14 - 167 Nm	
M16 - 270 Nm	