

Fitting Instructions



SKU

TXR853

PRODUCT

TAG Extreme Recovery (XR) Towbar for Toyota Landcruiser 76 Series Wagon (03/2007 - on)

SPECIFICATIONS

- Towbar Class: 4 Heavy Duty XR
- Towing Capacity: 3500kg
- Tow ball Weight: 350kg
- Recovery Point WLL:4000kg
- Approx. Fitment Time: 90 Minutes



Scan for latest
version of these
instructions

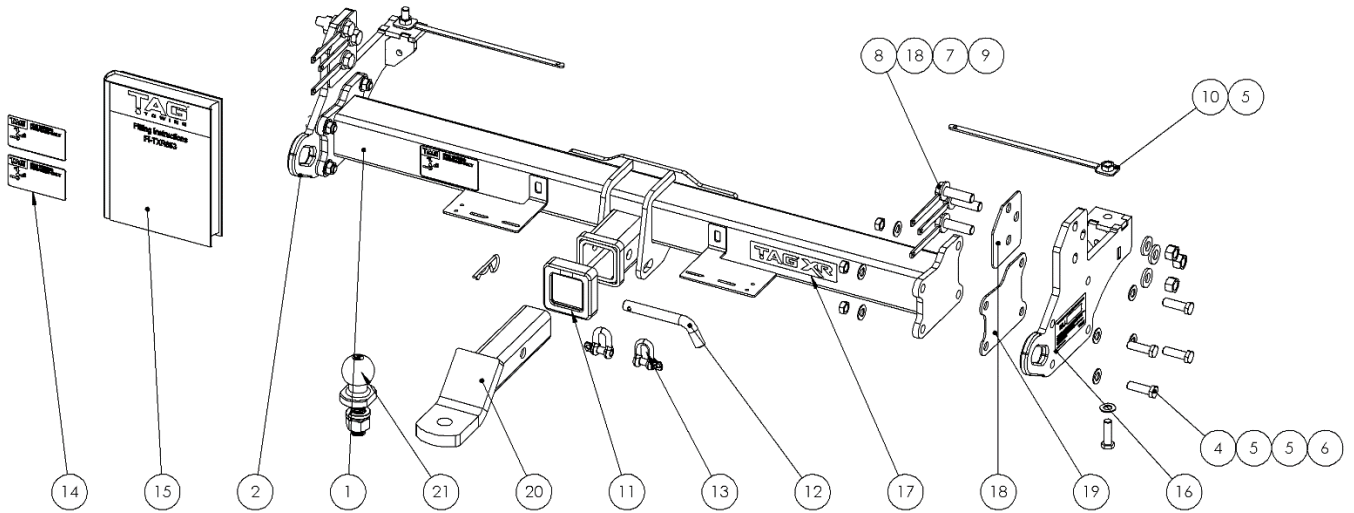
TOOLS REQUIRED

- Spanners
- Sockets
- Air Saw or similar.
- Trim Removal Tool
- Torque Wrench
- Cold Chisel & Hammer

IN THIS GUIDE

- Fitment Instructions
- Torque Settings
- Warranty Info

Towbar Assembly



Item No.	Description	QTY.	Item No.	Description	QTY.
1	Centre Assembly	1	12	Class 4 Pin & Clip	1
2	End Plate Assembly	1	13	D-Shackle - 10mm. 1000kg	2
3	End Plate Assembly DS	1	14	TAG Compliance Sticker	3
4	M12 x 1.25 x 40 Bolt	10	15	Fitting Instruction	1
5	M12 Flat Washer	18	16	Tag WLL Sticker (Blank)	1
6	M12 x 1.25 Nut	8	17	TAG XR Sticker 150 x 33mm	1
7	M14 Flat Washer	6	18	Chassis Spacer (Rear)	2
8	M14 x 1.5 x 50 Chassis Bolt Plate	6	19	End Cap Spacer	2
9	M14 X 1.5 Nut	6	20	L4045 TBM	1
10	Long Nut Plate	2	21	50mm TAG Tow Ball - Zinc	1
11	TAG Hitch Cover	1			

Important Information



Warning:

- This product is for towing purposes only and must only be loaded as shown in your vehicle Owner's Manual.
- This towbar is NOT to be drilled, cut, welded, or modified in any way.
- Check behind chassis rail and body panels before drilling to ensure no hazards are present.
- All load ratings shown are under the assumption your trailer has a functional braking system installed.
- When installed in positions other than the one depicted in these instructions the Tow Ball Mount may interfere or obstruct certain features of your vehicle (tailgate opening, Chassis clearance, etc.)

General:

- Before fitting this towbar read fitting instructions and check installation hardware is correct.
- Check that the towbar is suitable for the vehicle and be wary of any changes to the vehicle design that may conflict with the fitting of this towbar. (Tray, Canopy, Suspension etc.)
- After drilling, blow any filings clear, remove any burrs and treat exposed metal with a rust inhibitor.
- The high tensile fasteners supplied with this product are an integral feature to achieving the specified rating, if replacement is required ensure that fasteners of the same grade (8.8) & quality are used. Contact an authorised TAG distributor or the TAG fitment center - (07) 3208 3022 - if further information is required.

Towbar Maintenance and Care:

It is recommended, when not in use, the Tow Ball Mount assembly and class 4 Pin and Clip is stored inside the car away from moisture to prevent standing water from forming rust. Inspect to ensure, on regular basis, fasteners are torqued to the specifications below and in good condition.

Ensure that the fitting instructions are read and understood prior to fitment, Following the fitment place these instructions in the vehicle's glovebox after installation is completed.

Metric Bolt Torque Settings										
Diameter	Pitch	Grade	Torque	Unit		Diameter	Pitch	Grade	Torque	Unit
M8	1.25	8.8	29	Nm		M12	1.25	10.9	125	Nm
M10	1.25	8.8	57	Nm		M12	1.50	10.9	105	Nm
M10	1.50	8.8	44	Nm		M14	1.25	10.9	195	Nm
M12	1.25	8.8	101	Nm		M14	1.50	10.9	165	Nm
M12	1.50	8.8	97	Nm		M16	1.25	10.9	295	Nm
M12	1.75	8.8	77	Nm		M16	1.50	10.9	250	Nm
M14	2.00	8.8	122	Nm		50mm Tow Ball	N/A	N/A	300	Nm
M16	2.00	8.8	190	Nm		70mm Tow Ball	N/A	N/A	750	Nm

Step 1: Remove Bumper

Remove the outer plastic endcap.

- Remove mudflap via 2x hex head screws & plastic grommets from wheel arch, 2x socket pan heads fastening the flare (1x inner & 1x outer), 1x hex head fastening the steel hanger to wheel arch, 1x hex head & plastic grommet from behind mudflap.
- Inside the end cap, remove 2x M8 nuts & 1x M8 bolt & nut fastening the end cap to the steel bumper. One fastening the top face, one fastening the rear face and one at the lower inner corner. Retain all fasteners.
- Remove plastic endcap.

Remove the inner steel centre sections.

- Disconnect the harness from the taillight. Inside the steel bumper section, remove 3x M10 nuts from the inner top face. Remove 2x M10 nuts from the outside of the bottom face and 1x M8 bolt fastening the steel bumper section to the centre aluminium centre step. Retain all fasteners. Remove steel section.
- Open the rear doors. Remove the plastic covers from the outer top trim covers to reveal a M6 hex bolt fastening to the top of the steel bumper support. Remove bolt and retain.
- Remove the steel bumper support from the outer face of the chassis via 3x M10 bolts. Discard the M10 bolts.

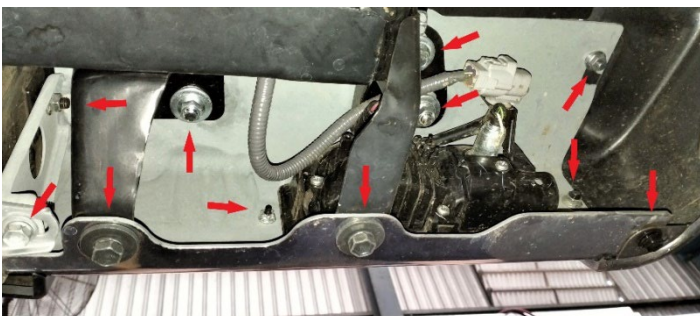
Drill Chassis

- Using a 14mm drill bit, enlarge the 3x OEM M10 bumper support holes in the chassis to 14mm. Once drilled through, use a cold chisel & hammer to remove the remaining captive nuts from the chassis. Blow all filings from the chassis. Treat the exposed metal with a suitable anti-rust paint.

Note: 2024 test vehicle had extra plate welded to inside face of chassis. Be careful not to distort the plate (if present) when removing the nuts with the cold chisel.

- Enlarge the 3x holes in the steel bumper support to 14mm using a die grinder or similar.

Note: Be aware of the M6 welded nut on the OEM bumper support as it can be in the way of the topmost M14 bolt head.



Installation Instructions



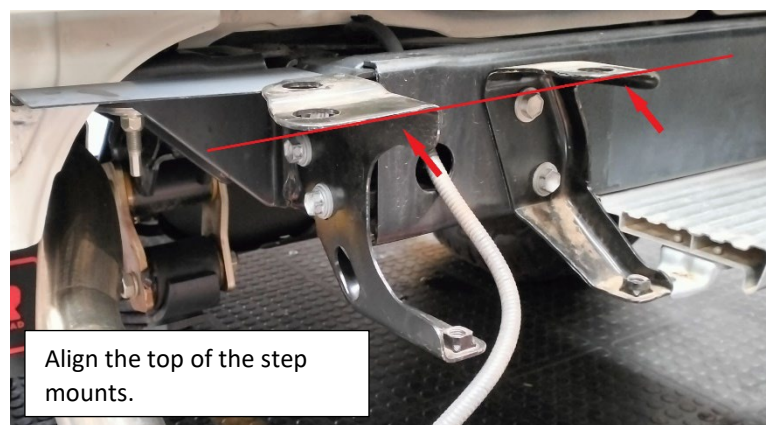
Step 2: Fit Towbar

Note: Check the width of the chassis. Use the 3mm chassis & main bar packers if required.

- Insert a M14x 1.5 x 50 bolt into the topmost hole of the endplate, with the 3mm packer and original bumper mount and attach to chassis rail with a M14x 1.5 nut plates inside the chassis rail. **OEM bumper plate must be against the chassis.** Repeat with the 2x remaining M14 fasteners.
- Repeat step (a) on the opposite side.
- Lift main bar up to end plates and insert 4x M12x 1.25x 40 bolts with flat washers into end plates and endcaps of main bar assembly. Fasten loosely with M12x 1.25 nuts and flat washers.
- Using the remaining vertical hole in each endplate as a guide, drill the bottom face of the chassis with a M12 drill bit. Treat with rust inhibitor.
- Feed the M12 nut on feeder plate into the chassis to align with the drilled hole and insert M12 x 1.25 x 40 with flat washer from below.

Note: Before tightening the M14 bolts, align the top bumper mounting tab with the nearest (inner) tab or the steel bumper won't sit flat and will be at an angle.

- Beginning at the chassis, tighten all bolts according to the torque table on page 3.



Installation Instructions



Step 4: Complete Towbar & Apply Spare Compliance Label

- a. Attach TAG Hitch cover with rubber mallet carefully to prevent breaking.
- b. Attach Tow ball to Ball Mount, slide ball mount into towbar receiver and secure with Pin and Clip if you are going to tow straight away. Alternatively secure the Ball Mount in a safe place inside your vehicle.
- c. Apply one of the compliance labels to the pillar of the driver's door. Leave the remaining label and the fitting instructions in the vehicle handbook.



TAG Warranty Statement



SWD warrants your TAG Towbar for its full product life under the following conditions:

- You can show proof of purchase.
- The towbar has been correctly installed by a suitably qualified installer.
- The towbar has not been modified or abused in any way and has only been used for the purpose intended.
- The towbar was not fitted second hand to your vehicle.

The extent of this warranty includes materials and workmanship used in the manufacture of the towbar and is to the equivalent value of current, full replacement cost.

Nothing stated or implied in this warranty limits in any way, the statutory rights that you may have.

To make a claim visit the original installer in the first instance or, if you are unable to or are not satisfied with their help, then contact us direct by phone on 1300 669122 or visit www.swd.com.au.